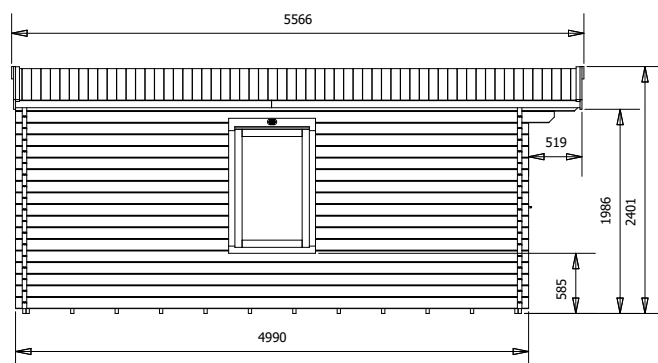
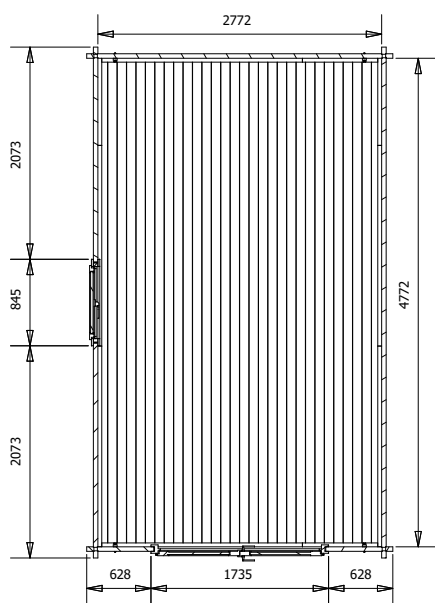
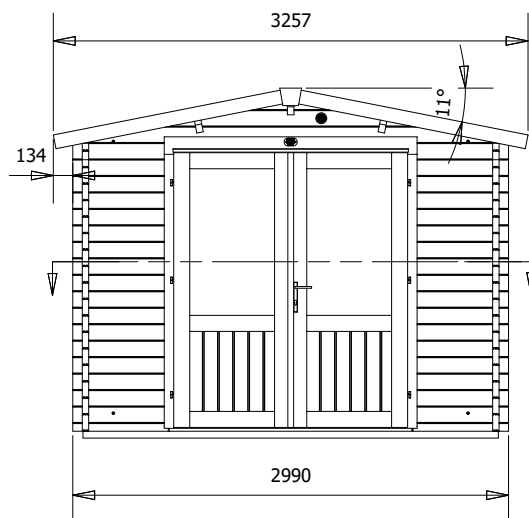


# Avon Log Cabin

## W3m x D5m



## Specification

- **Overall External Dimensions:** 3.25m x 5.52m (10' 7" x 18' 1")
- **External Width:** 2.99m (9' 10")
- **External Depth:** 4.99m (16' 4")
- **Internal Width:** 2.77m (9' 2")
- **Internal Depth:** 4.77m (15' 8")
- **Internal Area (m<sup>2</sup>):** 13.21m<sup>2</sup>
- **Ridge Height:** 2.38m (7' 9")
- **Internal Eaves Height:** 2.02m (6' 7")
- **Wall U-Value:** 1.93 W/m<sup>2</sup>k
- **Roof Overhang:** 0.58m (1' 7")
- **Roof Style:** Traditional
- **Roof & Floor Thickness:** 19mm Tongue and Groove
- **Floor Bearers:** Pressure Treated
- **Roof Purlins:** 24mm Double Glazing Included
- **Building Style:** Strong Interlocking Tongue & Groove Logs

- **Door Locking System:** Industry Leading 4 Point Lock - 2 Cams, Latch & Hook Bolt
- **Door Height (Including Frame):** 2.02m (6' 7")
- **Door Height (Walkthrough Height):** 1.82m (5' 11")
- **Door Width (Walkthrough Width):** 1.55m (5' 1")
- **Window Locking System:** Secure Multi-Point Locking with Espagnolettes
- **Window Opening Size:** 0.66m x 1.08m (2' 1" x 3' 6")
- **Glazing Material:** 4mm Toughened Glass
- **Included as Standard:** Plastic Vents, Georgian Bars, Adjustable Storm Braces, Assembly Instructions and Fixings
- **Approx. Assembly Time:** 1 - 2 Days\*

\*This is an approximate time only, based on 2 people. Assembly time may vary depending on season/weather conditions, foundation type, ability of those constructing, etc