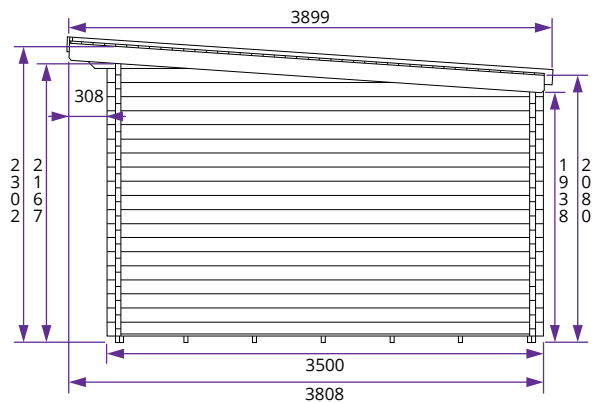
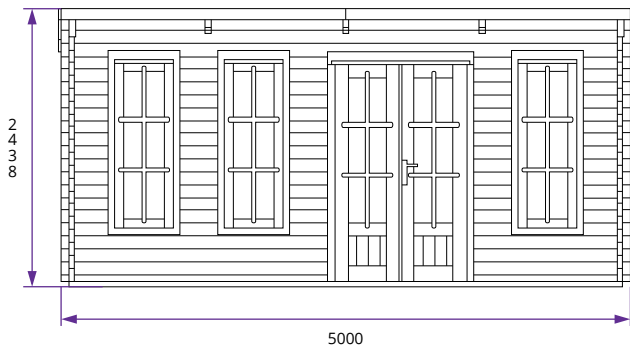


# Terminator Log Cabin W5.0m x D3.5m



## Specification

- **Overall External Dimensions:** 5.00m x 3.89m (16' 4" x 12' 9")
- **External Width:** 5.00m (16' 4")
- **External Depth:** 3.50m (11' 5")
- **Internal Width:** 4.78m (15' 8")
- **Internal Depth:** 3.28m (10' 9")
- **Internal Area (m<sup>2</sup>):** 15.69m<sup>2</sup>
- **Ridge Height:** 2.44m (8' 0")
- **Internal Eaves Height Front** (to under the roof boards)\*: 2.30m (7' 6")
- **Internal Eaves Height Front** (to under the roof purlins)\*: 2.16m (7' 1")
- **Internal Eaves Height Back** (to under the roof boards): 2.08m (6' 9")
- **Internal Eaves Height Back** (to under the roof purlins): 1.93m (6' 3")†
- **Wall U-Value:** 1.93 W/m<sup>2</sup>k
- **Roof Style:** Pent
- **Roof & Floor Thickness:** 19mm Tongue and Groove
- **Floor Bearers:** Pressure Treated

- **Storm Braces:** Included
- **Door Height (Including Frame):** 2.02m (6' 7")
- **Door Height (Walkthrough Height):** 1.88m (6' 2")
- **Door Width (Walkthrough Width):** 1.10m (3' 7")
- **Door Locking System:** Industry Leading 4 Point Lock - 2 Cams, Latch & Hook Bolt
- **Window Locking System:** Multi Point with Mushroom Headed Espagnolettes
- **Window Opening Size:** 0.44m x 1.37m (1' 5" x 4' 5")
- **Glazing Material:** 4mm Toughened Glass
- **Glazing Options:** 24mm Double Glazing as Standard!
- **Ventilation:** 2 Plastic Vents Included
- **Approx. Assembly Time:** 1 - 2 Days\*

\*This is an approximate time only, based on 2 people. Assembly time may vary depending on season/weather conditions, foundation type, ability of those constructing, etc