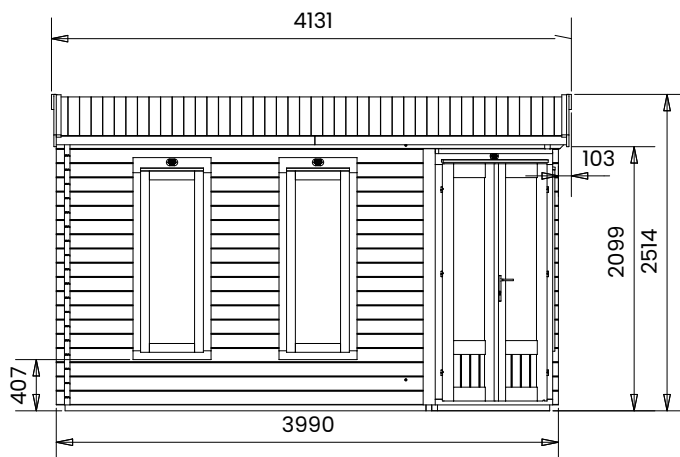
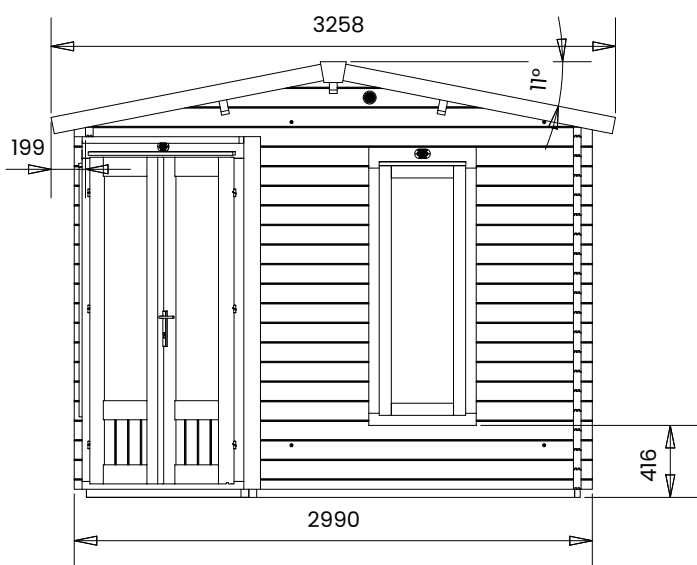
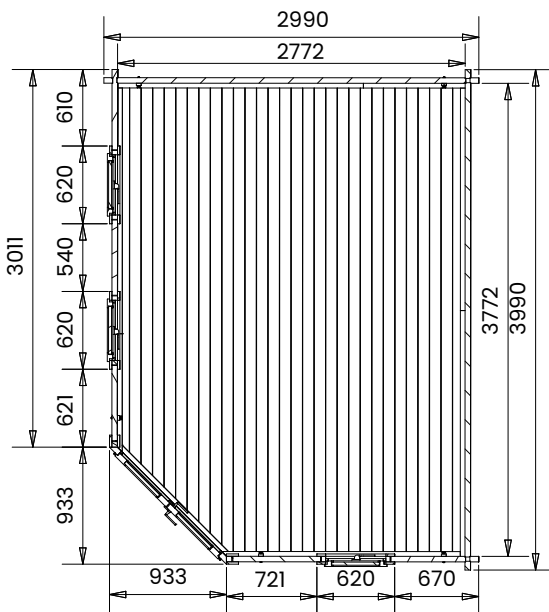




DaftBadger Corner log Cabin

4m x 3m



Specification

- **Overall External Dimensions:** 4.09m x 3.26m (13' 5" x 10' 8.25")
- **External Width:** 3.99m (13' 1")
- **External Depth:** 2.99m (9' 9.75")
- **Internal Width:** 3.77m (12' 4.5")
- **Internal Depth:** 2.27m (9' 1")
- **Internal Area (m²):** 9.57m²
- **Ridge Height:** 2.49m (8' 2")
- **Wall U-Value:** 1.93 W/m²k
- **Roof Style:** Pent
- **Roof & Floor Thickness:** 19mm Tongue and Groove
- **Floor Bearers:** Pressure Treated
- **Storm Braces:** Included
- **Door Height (Walkthrough Height):** 1.82m (5' 11")
- **Door Width (Walkthrough Width):** 1.11m (3' 7.75")

- **Door Locking System:** Industry Leading 4 Point Lock - 2 Cams, Latch & Hook Bolt
- **Window Locking System:** Multi Point with Mushroom Headed Espagnolettes
- **Window Opening Size:** 0.44m x 1.37m (1' 5" x 4' 5")
- **Glazing Material:** 24mm Toughened Glass
- **Glazing Options:** 24mm Double Glazed
- **Ventilation:** 2 Plastic Vents Included
- **Approx. Assembly Time:** 1 - 2 Days*

*This is an approximate time only, based on 2 people. Assembly time may vary depending on season/weather conditions, foundation type, ability of those constructing, etc