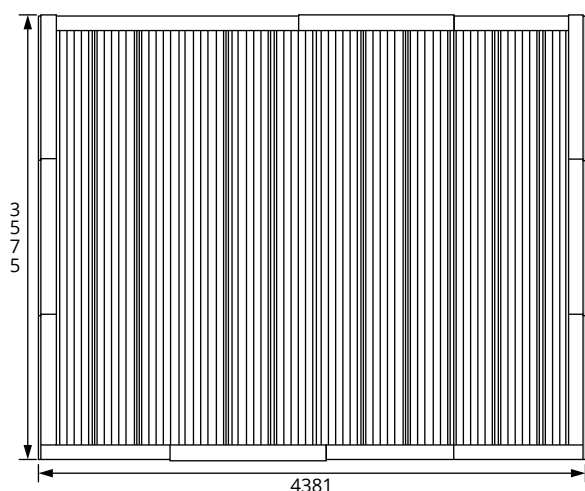
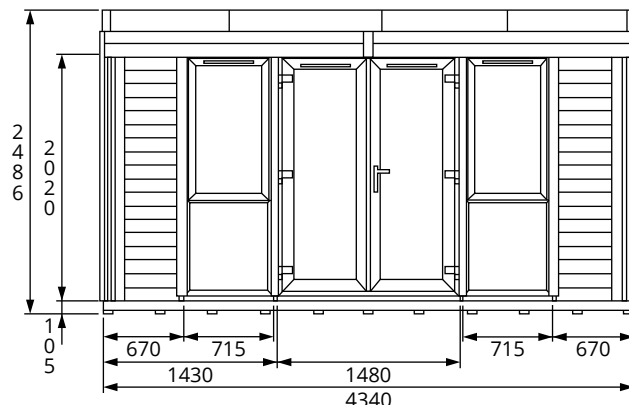


Titania Garden Office

W4.5m x D3.5m



Specification

- Overall External Dimensions: 4.38m x 3.57m (14' 4" x 11' 8")
- External Width: 4.34m (14' 2")
- External Depth: 3.25m (10' 7")
- Internal Width: 4.10m (13' 5")
- Internal Depth: 3.01m (9' 10")
- Internal Area (m²): 12.35m²
- Ridge Height: 2.48m (8' 1")
- Internal Eaves Height (Front): 2.18m (7' 1")
- Internal Eaves Height (Rear): 1.99m (6' 6")
- Overall Wall Thickness: 120mm
- Roof: Insulated IzoPanel
- Roof Thickness: 135mm (100mm Insulated Core)
- Wall U-Value (W/m²k): 0.59
- Roof U-Value (W/m²k): 0.21
- External Timber Thickness: 15mm Shiplap Cladding
- Insulation Thickness: 25mm Polyurethane
- Timber: Pressure Treated
- Internal Finish: 10mm Gypsum Fibreboard
- Floor: 40mm Insulated Sandwich Panel
- Door Locking: 9 Point Locking System
- Door Opening Size: 1.34m x 1.84m (4' 4" x 6' 0")
- Window Locking: Multi Point Locking System
- Glazing Material: 28mm Double Glazed, Toughened Glass
- uPVC: White uPVC included as standard. Other colours available.