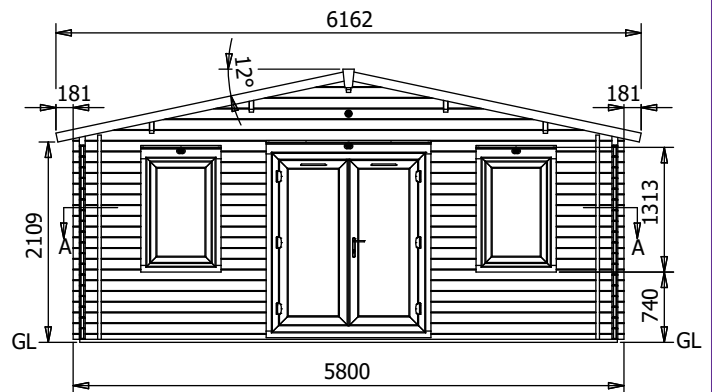
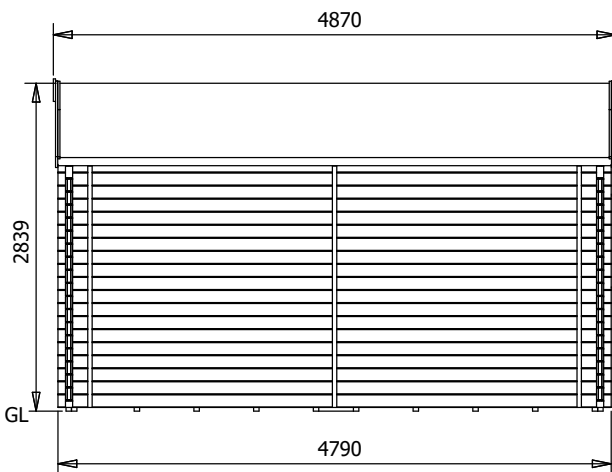
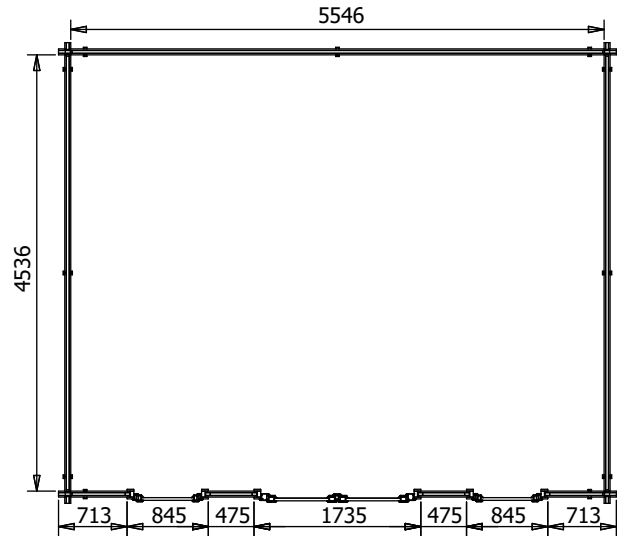


uPVC Vanguard Warmalog

W6m x D5m



Specification

- **Overall External Dimensions:** 6.16m x 4.83m (20' 2.5" x 15' 10.25")
- **External Width:** 5.8m (19' 0.25")
- **External Depth:** 4.8m (15' 9")
- **Ridge Height:** 2.84m (9' 3.75")
- **Internal Width:** 5.54m (18' 2.25")
- **Internal Depth:** 4.54m (14' 10.5")
- **Wall Thickness:** 62mm
- **Purlin Thickness:** 45mm
- **Floor Bearers:** 32mm x 47mm
- **Floor Panel Thickness:** 50mm

- **Roof Panel Thickness:** 40mm
- **Roof Board Thickness:** 19mm
- **Floor Bearers:** Pressure Treated
- **Door Height:** 2.05m (6' 9")
- **Door Width:** 1.73m (5' 8.25")
- **Window Opening Size:** 1.02m x 0.60m
- **Glazing Material:** 28mm double glazed toughened glass
- **Approx. Assembly Time:** 2 Days*

*This is an approximate time only, based on 2 people. Assembly time may vary depending on season/weather conditions, foundation type, ability of those constructing, etc