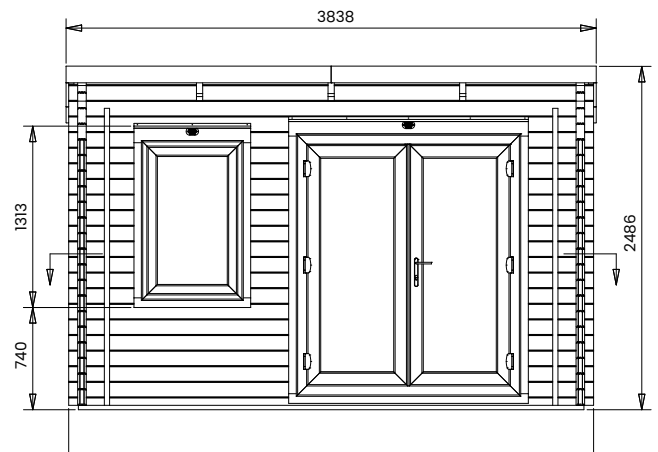
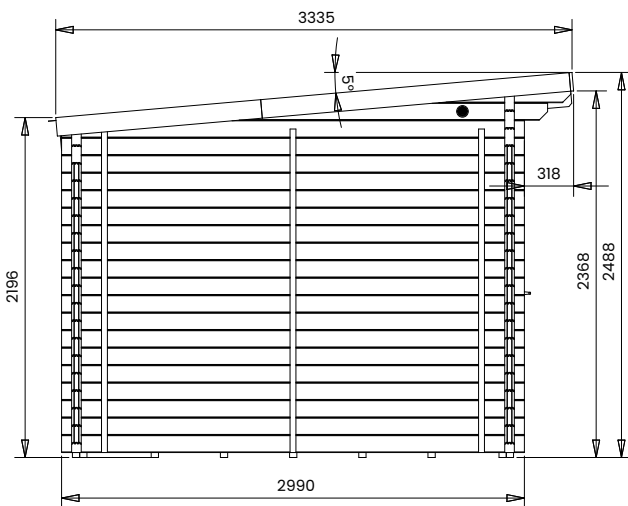
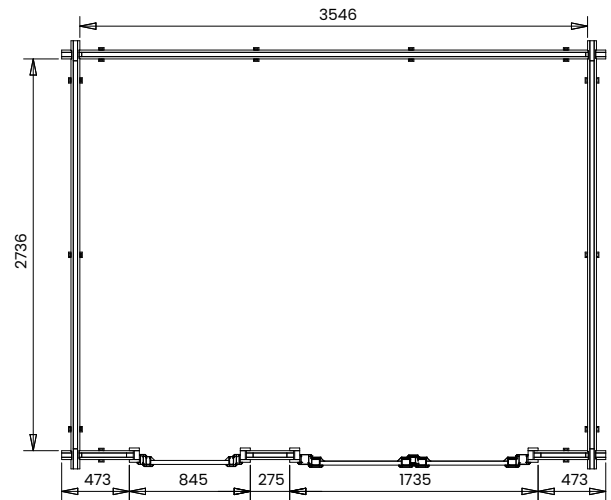


Terminator with uPVC INSULATED Log Cabin Approx. W3.8m x D3.0m



Specification

- Please Note: All sizes quoted are nominal
- Overall External Dimensions: 3.8m x 3.0m (12' 5" x 9' 10")
- External width including the roof: 3.838m (12' 7")
- External depth including the roof: 3.335m (10' 11")
- External width (walls): 3.8m
- External depth (walls): 2.99m
- Internal Width: 3.546m (11' 7")
- Internal Depth: 2.736m (8' 11")
- Internal Area (m²): 9.7m²
- Front Roof Overhang: 0.318m (1' 0")
- Roof height - Front: 2.488m (8' 1")
- Roof height - Back: 2.196m (7' 2")
- Internal Eaves Height Front (FFL to under roof boards): 2.288m (7' 6")
- Internal Eaves Height Front (FFL to under purlins): 2.148m (7' 0")

- Internal Eaves Height Back (FFL to under roof boards): 2.049m (6' 8")
- Internal Eaves Height Back (FFL to under purlins): 1.91m (6' 3")
- Wall Thickness: 0.062
- Roof board thickness: 0.019m
- Roof panel thickness: 0.04m
- Floor panel thickness: 0.05m
- Please Note: All fixings needed for assembly are supplied.
- Assembly Time: 1-2 Days*
- *This is an approximate time only, based on 2 people. Assembly time may vary depending on season/weather conditions, foundation type, ability of those constructing, etc.