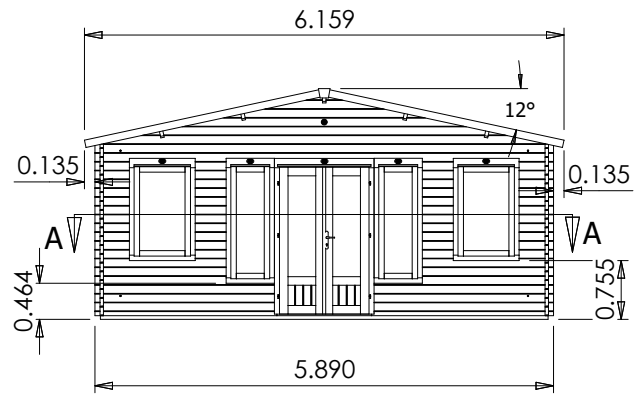
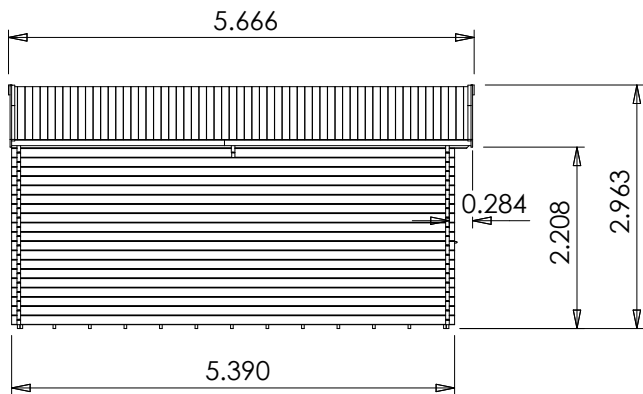
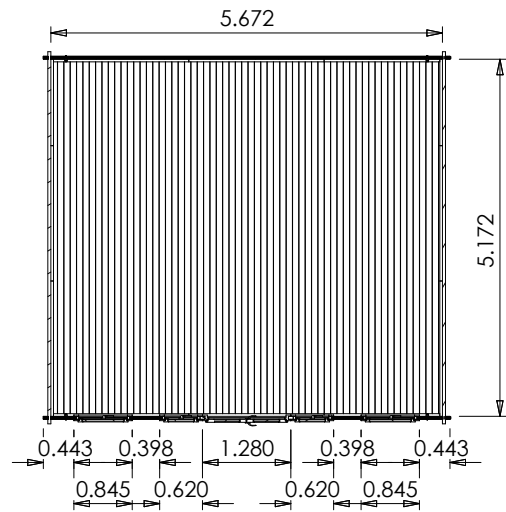


Vanguard Log Cabin



Specification

- **Overall External Dimensions:** 6.159m x 5.666m (20' 2" x 18' 7")
- **External Width:** 5.89m (19' 4")
- **External Depth:** 5.39m (17' 8")
- **Internal Width:** 5.672m (18' 7")
- **Internal Depth:** 5.172m (16' 11")
- **Internal Area (m²):** 29.336m²
- **Ridge Height:** 2.963m (9' 9")
- **Internal Eaves Height:** 2.249m (7' 5")
- **Front Roof Overhang:** 0.284m (0' 11")
- **Roof Thickness:** 19mm Tongue & Groove
- **Roof Covering Options:** None, Felt or Shingles
- **Building Style:** Strong Interlocking Tongue & Groove Logs
- **Walls:** 100% Slow-Grown Spruce
- **Wall U-Value (W/m²K):** 1.93 W/m²K

- **Floor Thickness:** 19mm Tongue & Groove
- **Floor Bearers:** Pressure Treated for Longevity
- **Door Style:** Double Glazed French Doors
- **Door Locking System:** Industry Leading 4 Point Lock - 2 Cams, Latch & Hook Bolt
- **Door Height (including frame):** 2.02m (6' 7")
- **Door Walkthrough Height:** 1.82m (5' 11")
- **Door Walkthrough Width:** 1.11m (3' 7")
- **Included as Standard:** Plastic Vents, Adjustable Storm Braces, Assembly Instructions and Fixings
- **Approx. DIY Assembly Time:** 2 Days This time is an approximation, based on two people building the basic product with no added extras. Assembly time may vary with additional items such as roof shingles, or external circumstances like the weather