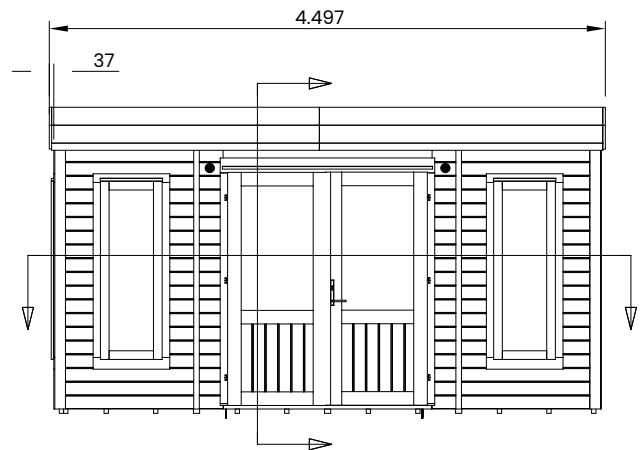
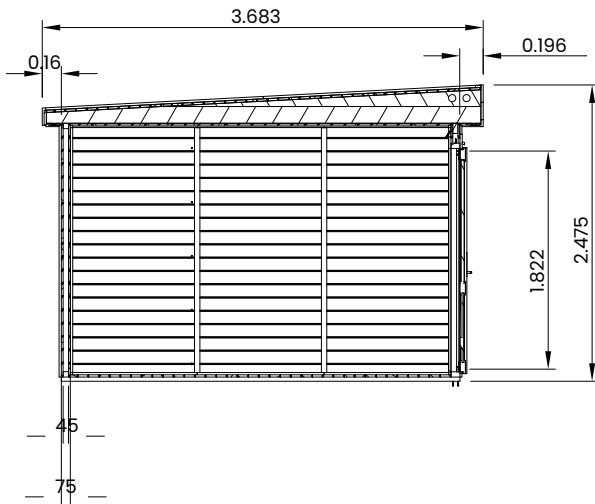
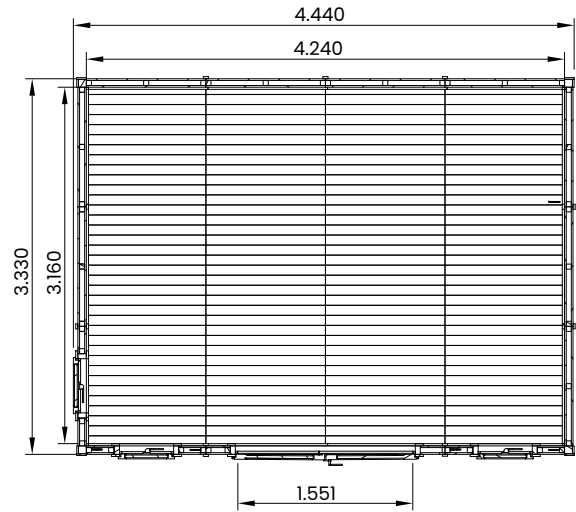


Dominator Insulated Garden Office



Specification

- **Please Note:** All sizes quoted are nominal
- **Overall External Dimensions:** 3.68m x 4.50m (12' 0" x 14' 9")

External Width: 3.33m (10' 11")

External Depth: 4.44m (14' 6")

Internal Width: 3.18m (10' 5")

Internal Depth: 4.24m (13' 10")

• **Internal Area (m²):** 13.48m²

• **Ridge Height:** 2.48m (8' 1")

• **Internal Eaves Height:** 2.09m (6' 10")

• **Roof Thickness:** 0.34m

• **Roof Covering:** Super Felt Included

• **Overall Wall Thickness:** 75mm

• **Floor Thickness:** 19mm

• **Framing:** 45mm

- **Door Walkthrough Height:** 1.82m (5' 11")
 - **Door Walkthrough Width:** 1.55m (5' 1")
 - **Door Locking System:** Multi-Point Locking System
 - **Glazing Material:** Safer 4mm Toughened Glass
 - **Glazing Options:** 24mm Double Glazing Included as Standard!
 - **Gaskets:** On all Windows and Doors
 - **Please Note:** All fixings needed for assembly are supplied
 - **Please Note:** All wood is planed and pre-cut (with exception of trims), for quick and easy construction.
 - **Approximately DIY Assembly Time:** 2 Days*
- *This is an approximate time only, based on 2 people. Assembly time may vary depending on season/weather conditions, foundation type, ability of those constructing, etc