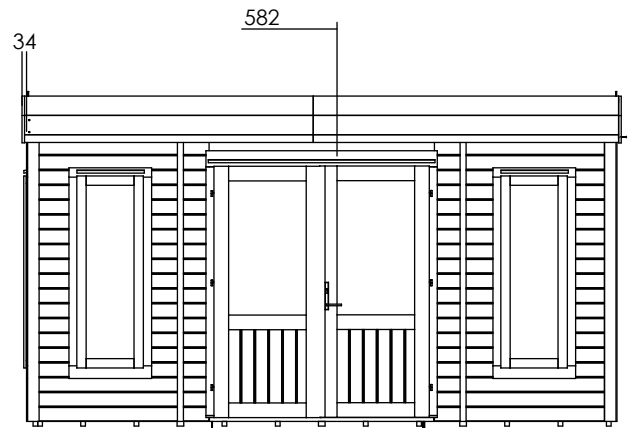
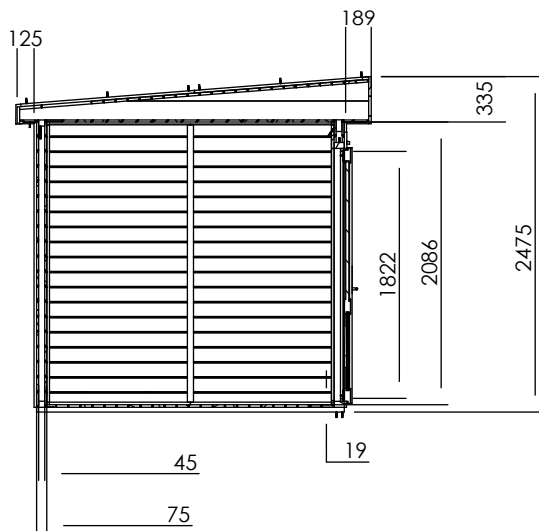
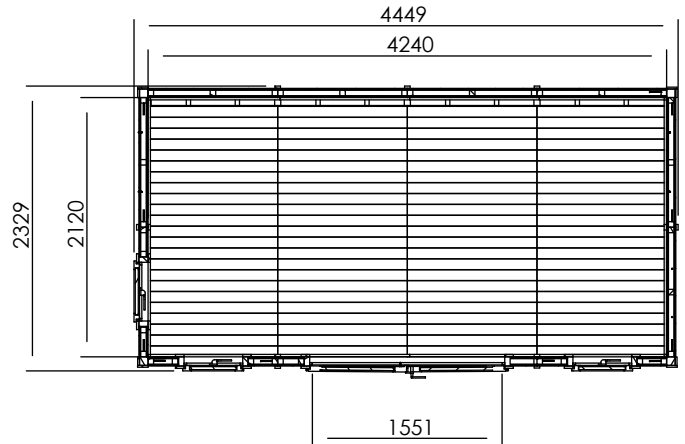


Dominator Office



Specification

- **Please Note:** All sizes quoted are nominal
- **External Width:** 4.45m (14' 7")
- **External Depth:** 2.33m (7' 7")
- **Internal Width:** 4.24m (13' 10")
- **Internal Depth:** 2.12m (6' 11")
- **Internal Area (m²):** 8.99m²
- **Internal Eaves Height:** 2.09m (6' 10")
- **Roof:** Insulated panel
- **Roof Thickness:** 0.34m
- **Roof Covering:** Super Felt Included
- **Roof Purlin Thickness:** 140mm x 40mm Tapered
- **Ridge Height:** 2.48m (8' 1")
- **Roof U-Value (W/m²K):** 0.49
- **Floor U-Value (W/m²K):** 0.64
- **Wall U-Value (W/m²K):** 0.63

- **Overall Wall Thickness:** 75mm
- **External Timber Thickness:** 15mm Shiplap Cladding
- **Insulation Thickness:** 25mm
- **Door style:** French Doors
- **Door Walkthrough Height:** 1.82m (5' 11")
- **Door Walkthrough Width:** 1.55m (5' 1")
- **Door Locking System:** Industry leading 4 Point Lock - 2 Cams, Latch & Hook Bolt
- **Window Locking System:** Multi Point with Mushroom Headed Espagnolettes
- **Window Opening Size:** 0.43m x 1.37m (1' 4" x 4' 5")
- **Gaskets:** On all Windows and Doors
- **Please Note:** All fixings needed for assembly are supplied