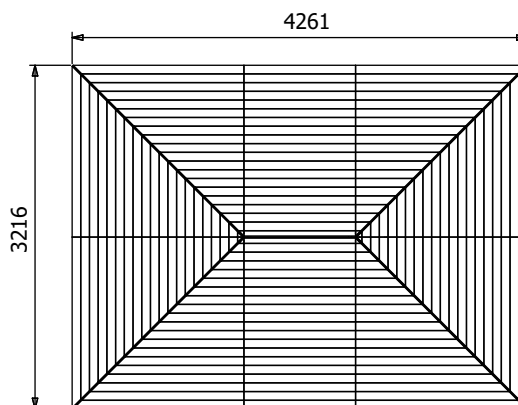
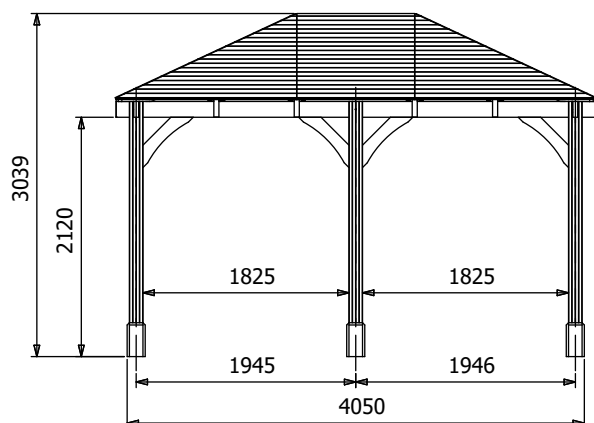
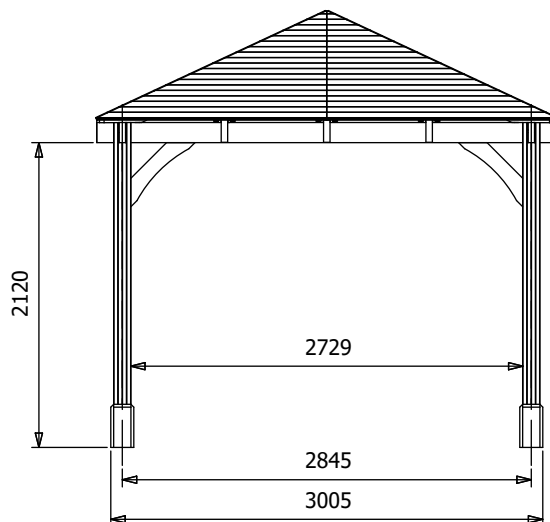


Leviathan Open Timber Framed Carport



Specification

- Overall External Dimensions: 4.26m x 3.22m (13' 11" x 10' 6")
- External Width: 4.24m (13' 10")
- External Depth: 3.20m (10' 5")
- Internal Width: 3.77m (12' 4")
- Internal Depth: 2.73m (8' 11")
- Overall Height: 3.04m (9' 11")
- Eaves Height: 2.12m (6' 11")
- Timber: Spruce
- Uprights: 120mm x 120mm
- Roof: 19mm Tongue & Groove Boards
- Roof Covering Options: None, Felt or Shingles
- Guarantee: 10 Years on Pressure Treated Timber against Rot and Insect Infestation

- Please Note: All fixings needed for assembly are supplied
- Approx. Assembly Time: 1 Day*
*This is an approximate time only, based on 2 people. Assembly time may vary depending on season/weather conditions, foundation type, ability of those constructing, etc