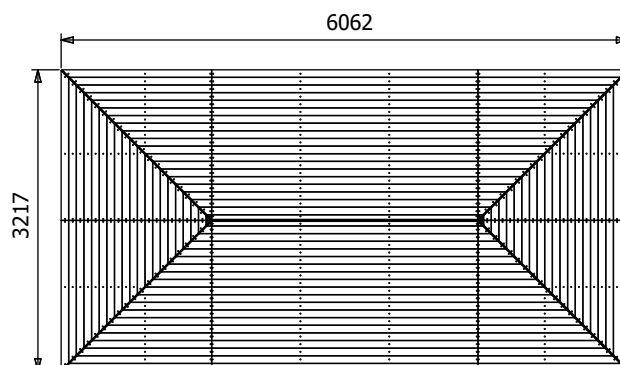
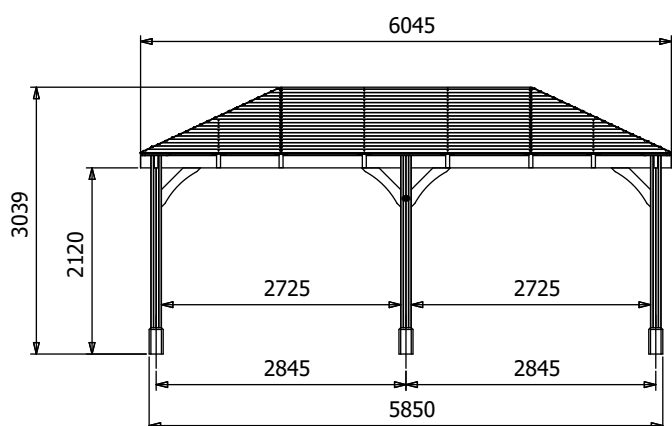
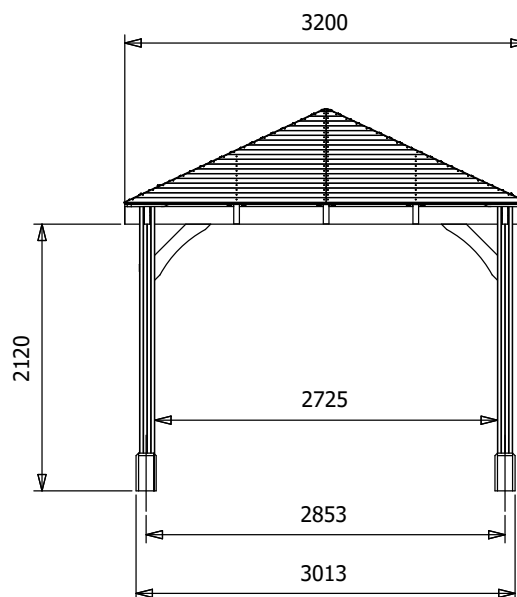


Leviathan Open Timber Framed Carport



Specification

- Overall External Dimensions: 6.06m x 3.22m (19' 10" x 10' 6")
 - External Width: 6.04m (19' 9")
 - External Depth: 3.04m (9' 11")
 - Internal Width (Post): 5.57m (18' 3")
 - Internal Depth (Post): 2.73m (8' 11")
 - Ridge Height: 3.04m (9' 11")
 - Eaves Height: 2.12m (6' 11")
 - Timber: Spruce
 - Uprights: 120mm x 120mm
 - Roof: 19mm Tongue & Groove Boards
 - Roof Covering Options: None, Felt or Shingles
 - Guarantee: 10 Years on Pressure Treated Timber against Rot and Insect Infestation
- Please Note: All fixings needed for assembly are supplied
- Approx. Assembly Time: 1 Day*
- *This is an approximate time only, based on 2 people. Assembly time may vary depending on season/weather conditions, foundation type, ability of those constructing, etc