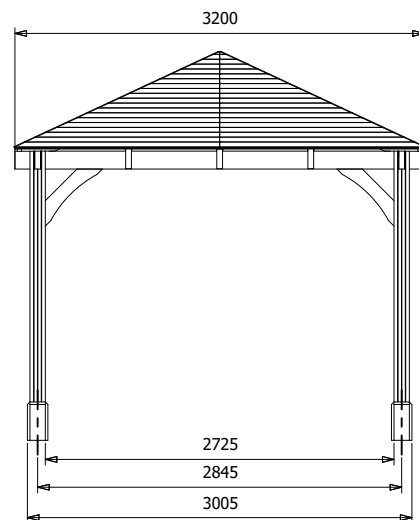
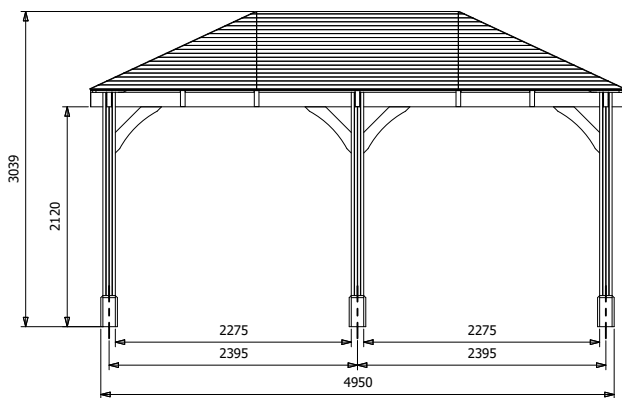
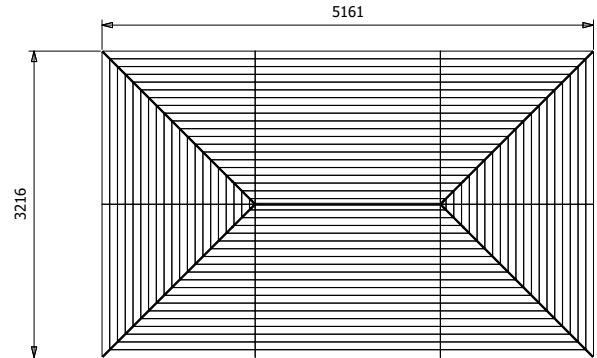


# Leviathan Walled Timber Framed Carport



## Specification

- **Please Note:** All sizes quoted are nominal
- **External Width:** 5.14m (16' 10")
- **External Depth:** 3.20m (10' 5")
- **Internal Height:** 4.67m (15' 3")
- **Internal Depth:** 2.72m (8' 11")
- **Internal Area (m<sup>2</sup>):** 12.70m<sup>2</sup>
- **Overall Height:** 3.04m (9' 11")
- **Internal Eaves Height:** 2.12m (6' 11")
- **Timber:** Spruce
- **Guarantee:** 10 Years on Timber against Rot and Insect Infestation
- **Roof:** 19mm Tongue and Groove Boards
- **Roof Covering Options:** None, Felt or Shingles

- **Uprights:** 120mm x 120mm
  - **Please Note:** All fixings needed for assembly are supplied
  - **Please Note:** All wood is pre-cut (with the exception of trims) for quick and easy construction.
  - **Approx. Assembly Time:** 1 - 2 Days\*
- \*This is an approximate time only, based on 2 people. Assembly time may vary depending on season/weather conditions, foundation type, ability of those constructing, etc

Image shows base product as an example and excludes any wall configurations.