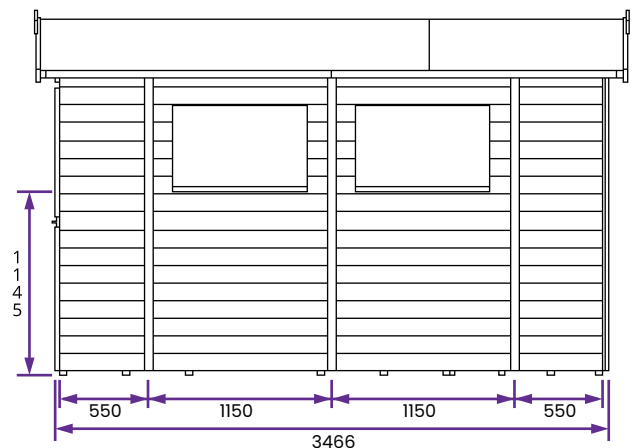
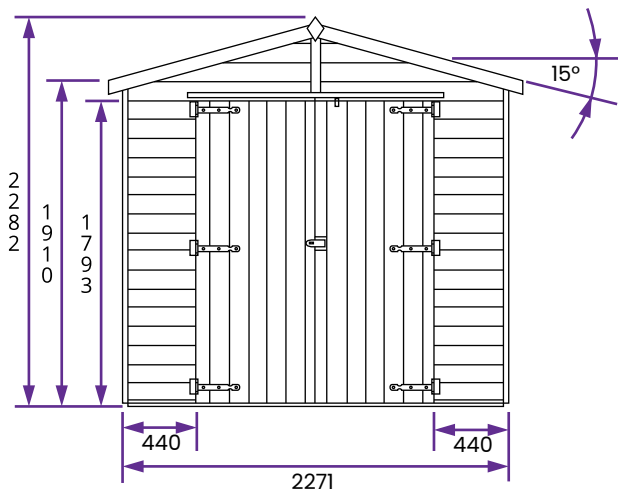
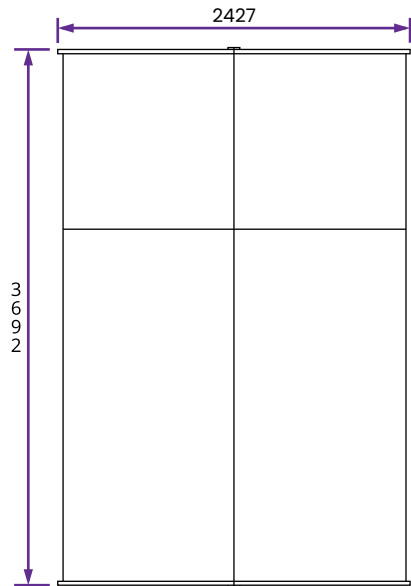


Sanctuary I Wooden Shed



Specification

- Overall External Dimensions: 2.40m x 3.60m (7' 10" x 11' 9")
 - External Width: 2.26m (7' 4")
 - External Depth: 3.47m (11' 4")
 - Internal Width: 2.13m (6' 11")
 - Internal Depth: 3.56m (10' 11")
 - Internal Area (m²): 7.09m²
 - Ridge Height: 2.22m (7' 3")
 - Internal Eaves Height: 1.88m (6' 2")
 - Wall Thickness: 15mm Shiplap
 - Framing: 35mm x 35mm
 - Timber: Pressure Treated
 - Roof & Floor: Water Resistant Sheet Material
 - Roof Felt: Superfelt Included
 - Glazing material: 4mm Toughened Glass
 - Floor Bearers: Pressure Treated
 - Door Opening Size: 1.38m x 1.70m (4' 6" x 5' 6")
 - Door Locking System: Zinc-plated Hasp and Clasp
 - Approx. Assembly Time: 1 - 2 Days*
- *This is an approximate time only, based on 2 people. Assembly time may vary depending on season/weather conditions, foundation type, ability of those constructing, etc
- Please Note: All fixings needed for assembly are supplied