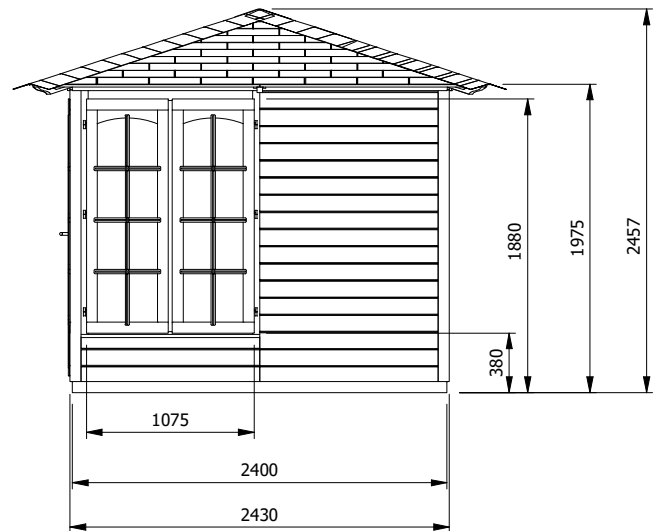
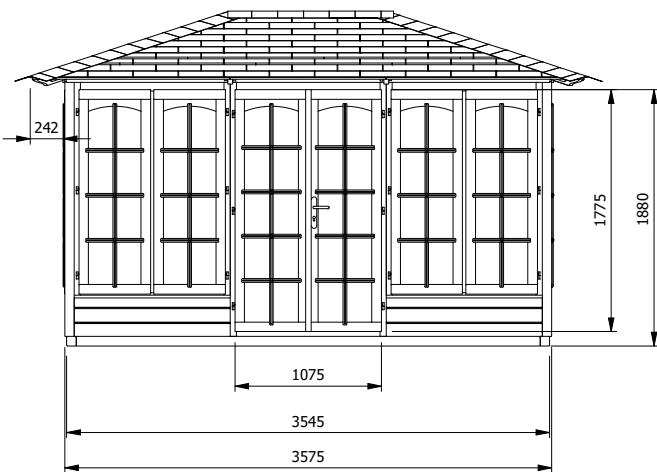
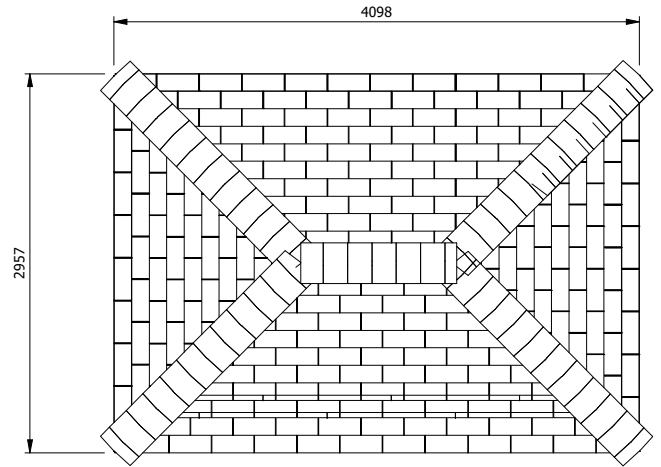


Valiant 350 Summerhouse



Specification

- **Please Note:** All sizes quoted are nominal
 - **Overall External Dimensions:** 4.12m x 2.97m (13' 6" x 9' 8")
 - **External Width:** 3.58m (11' 8")
 - **External Depth:** 2.43m (7' 11")
 - **Internal Width:** 3.45m (11' 3")
 - **Internal Depth:** 2.28m (7' 5")
 - **Internal Area (m²):** 7.85m²
 - **Ridge Height:** 2.43m (7' 11")
 - **Internal Eaves Height:** 1.89m (6' 2")
 - **Roof Options:** 19mm Tongue & Groove
 - **Roof Covering Options:** None, Felt or Shingles
 - **Wall Thickness Options:** 15mm
 - **Walls:** Spruce
 - **Floor Options:** 19mm Tongue & Groove
 - **Floor Bearers:** Pressure Treated
 - **Door Style:** French Doors, Fully glazed
 - **Door Locking System:** Cylinder Lock
 - **Door Opening Size:** 1.05m x 1.75m (3' 5" x 5' 8")
 - **Door Walkthrough Height:** 1.76m (5' 9")
 - **Windows:** 4 French style Opening
 - **French Window Opening Size:** 1.05m x 1.48m (3' 5" x 4' 10")
 - **Glazing Material:** 4mm Toughened Glass
 - **Georgian Bars:** Included - optional to fit
 - **Approx. DIY Assembly Time:** 1-2 Days*
- *This is an approximate time only, based on 2 people. Assembly time may vary depending on season/weather conditions, foundation type, ability of those constructing, etc
- **Please Note:** This Summerhouse arrives at your door untreated. We sell a range of suitable coloured timber treatments (supplied in tins).
 - **Please Note:** All fixings needed for assembly are supplied