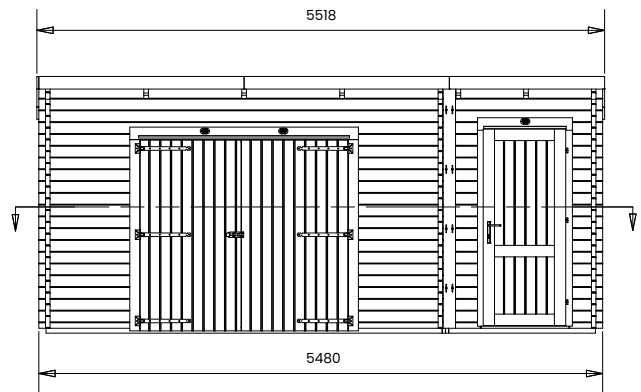
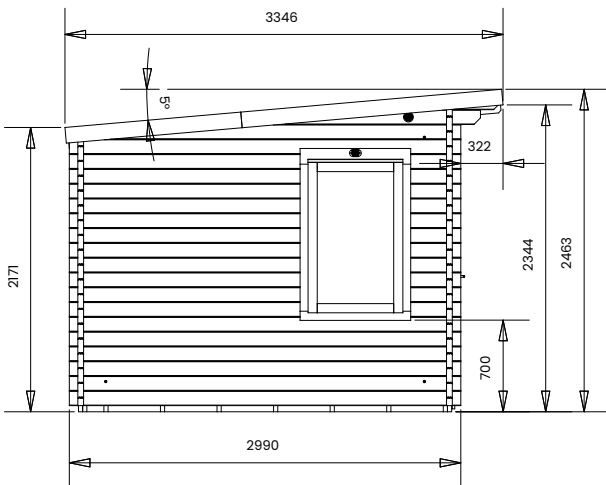
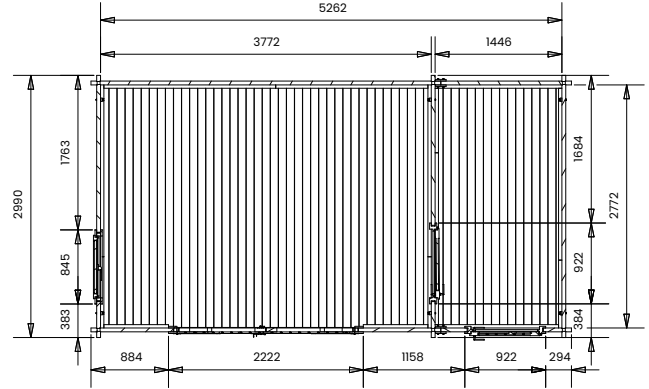


# EvilRob Multi Room Log Cabin

## Workshop Approx. W5.5m x D3.0m



## Specification

- Overall External Dimensions: 5.52m x 3.35m (18' 1" x 10' 11")
- External Width: 5.48m (17' 11")
- External Depth: 2.99m (9' 9")
- Main Room Internal Width: 3.77m (12' 4")
- Main Room Internal Depth: 2.77m (9' 1")
- Main Room Internal Area (m<sup>2</sup>): 10.44
- Store Room Internal Width: 1.45m (4' 9")
- Store Room Internal Depth: 2.77m (9' 1")
- Store Room Internal Area (m<sup>2</sup>): 4.02
- Ridge Height: 2.46m (8' 0")
- Internal Eaves Height Front (to under the roof boards): 2.32m (7' 7")
- Internal Eaves Height Front (to under the roof purlins): 2.18m (7' 1")
- Internal Eaves Height Back (to under the roof boards): 2.07m (6' 9")
- Internal Eaves Height Back (to under the roof purlins): 1.93m (6' 3")
- Window Opening Size: 0.66m x 1.08m (2' 1" x 3' 6")
- Window Locking System: Secure Multi-Point Locking with Espagnolettes
- Main Door Height (Walkthrough Height): 1.79m (5' 10")
- Main Door Width (Walkthrough Width): 1.99m (6' 6")
- Side Door Height (Walkthrough Height): 1.82m (5' 11")
- Side Door Width (Walkthrough Width): 0.74m (2' 5")
- Floor Bearers: Pressure Treated for Longevity
- Glazing Options: 24mm Double Glazing Included as Standard!
- Glazing Material: 4mm Toughened Glass
- Wall U-Value (W/m<sup>2</sup>K): 1.93 W/m<sup>2</sup>K
- Roof Purlins: 140mm x 45mm
- Roof Thickness: 19mm Tongue & Groove