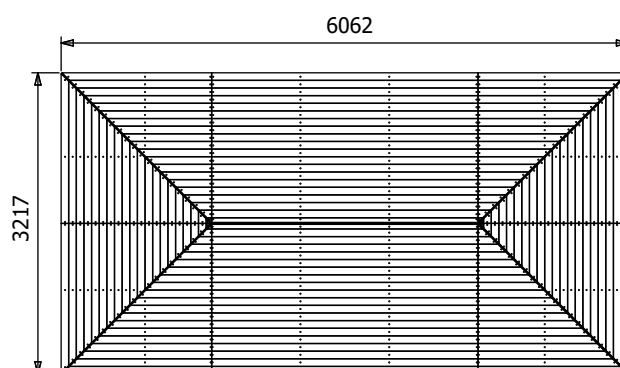
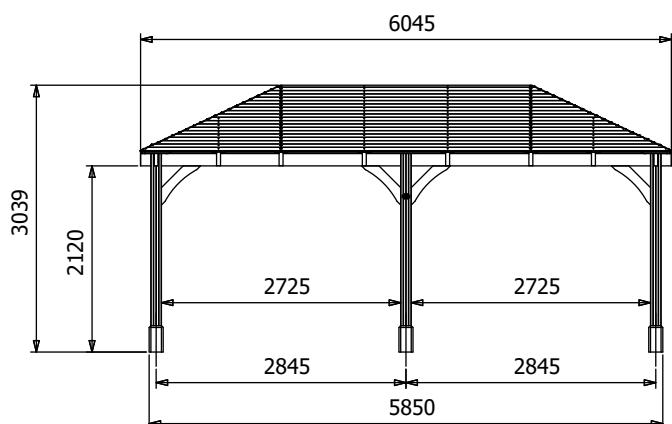
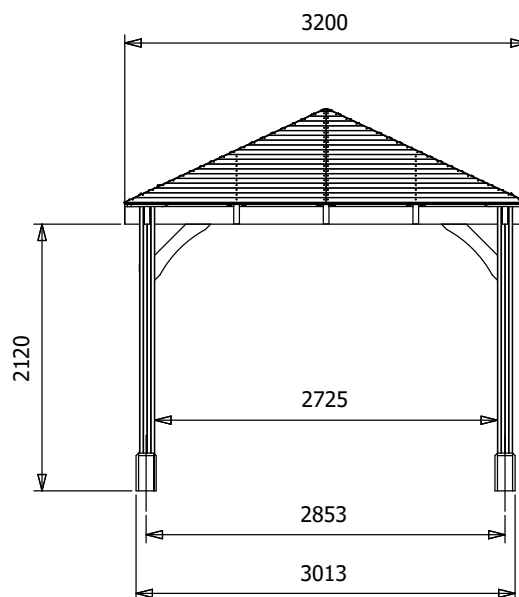


# Leviathan Garden Bar



## Specification

Image shows base product as an example and excludes any wall configurations.

- **Please Note:** All sizes quoted are nominal
- **Overall External Dimensions:** 6.06m x 3.22m (19' 10" x 10' 6")
- **External Width:** 6.04m (19' 9")
- **External Depth:** 3.04m (9' 11")
- **Internal Width (Post):** 5.57m (18' 3")
- **Internal Depth (Post):** 2.73m (9' 11")
- **Ridge Height:** 3.04m (9' 11")
- **Eaves Height:** 2.12m (6' 11")
- **Bar Height:** 1.14m (3' 8")
- **Timber:** Spruce
- **Uprights:** 120mm x 120mm
- **Roof:** 19mm Tongue and Groove Boards

- **Roof Covering Options:** None, Felt or Shingles
  - **Guarantee:** 10 Years on Pressure Treated Timber against Rot and Insect Infestation
  - **Please Note:** All fixings needed for assembly are supplied
  - **Approx. Assembly Time:** 1-2 Days\*
- \*This is an approximate time only, based on 2 people. Assembly time may vary depending on season/weather conditions, foundation type, ability of those constructing, etc