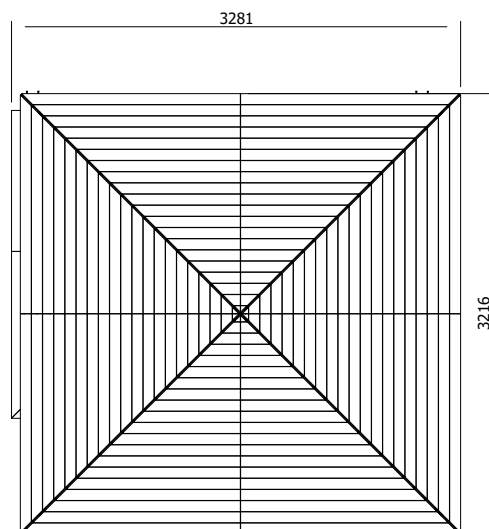
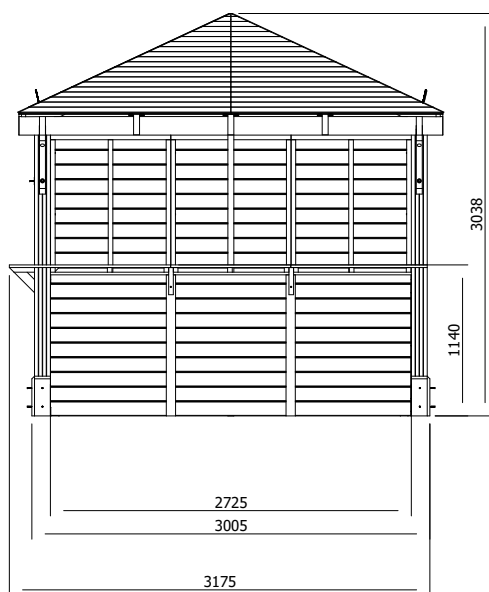
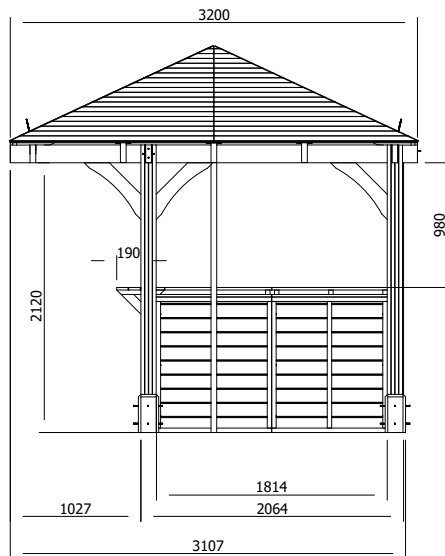


Leviathan Garden Bar



Specification

- **Please Note:** All sizes quoted are nominal
- **External Width:** 3.22m (10' 6")
- **External Depth:** 3.22m (10' 6")
- **Internal Width (Post):** 2.73m (8' 11")
- **Internal Depth (Post):** 1.82m (5' 11")
- **Overall Height:** 3.04m (9' 11")
- **Internal Eaves Height:** 2.12m (6' 11")
- **Bar Height:** 1.14m (3' 8")
- **Timber:** Spruce
- **Guarantee:** 10 Years on Pressure Treated Timber against Rot and Insect Infestation

- **Uprights:** 120mm x 120mm
 - **Roof:** 19mm Tongue and Groove Boards
 - **Roof Covering Options:** None, Felt or Shingles
 - **Approx. Assembly Time:** 1 - 2 Days*
- *This is an approximate time only, based on 2 people. Assembly time may vary depending on season/weather conditions, foundation type, ability of those constructing, etc