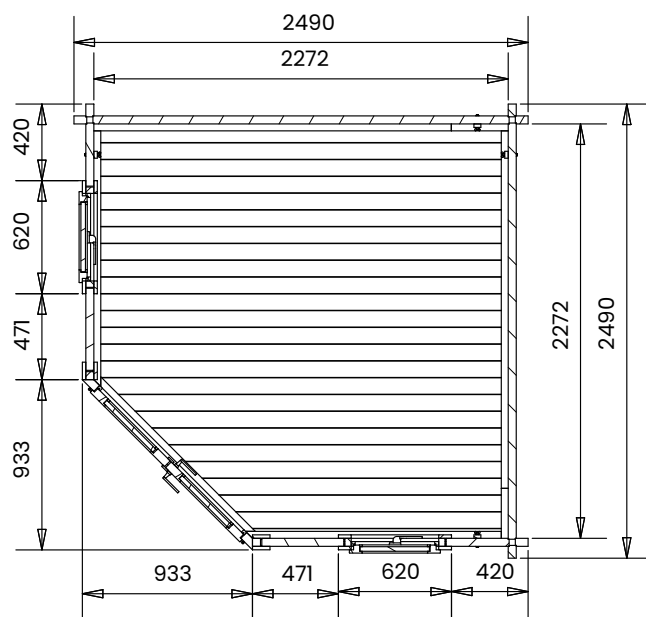
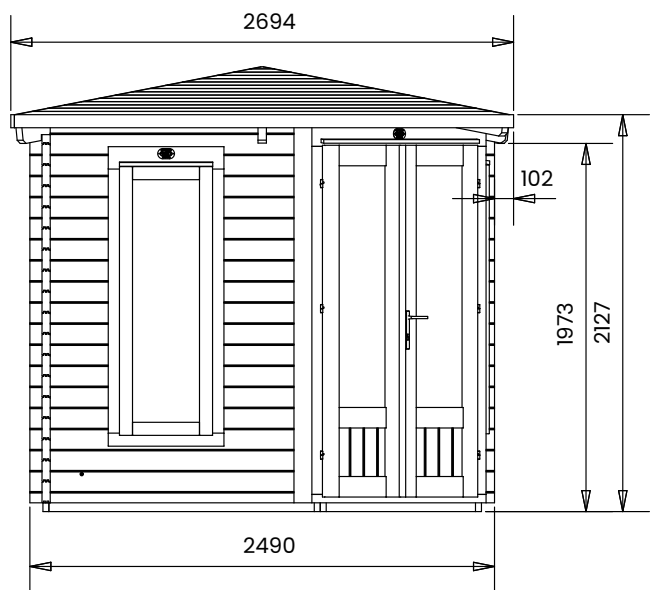
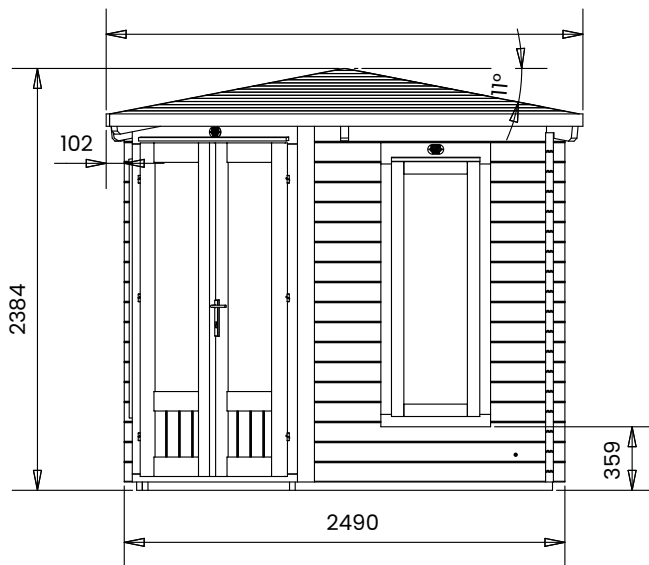


Coronet Corner Log Cabin



Specification

- Overall External Dimensions: 2.69m x 2.69m (8' 9" x 8' 9")
- External Width: 2.49m (8' 2")
- External Depth: 2.49m (8' 2")
- Internal Width: 2.20m (7' 2")
- Internal Depth: 2.20m (7' 2")
- Internal Area (m²): 4.84m²
- Ridge Height: 2.38m (7' 9")
- Internal Eaves Height: 2.07m (6' 9")
- Wall U-Value: 1.93 W/m²k
- Roof & Floor Thickness: 19mm Tongue and Groove
- Floor Bearers: Pressure Treated
- Storm Braces: Included
- Door Locking System: Industry Leading 4 Point Lock - 2 Cams, Latch & Hook Bolt

- Door Height (Including Frame): 2.01m (6' 7")
- Door Height (Walkthrough Height): 1.82m (5' 11")
- Window Locking System: Multi Point with Mushroom Headed Espagnolettes
- Window Opening Size: 0.44m x 1.37m (1' 5" x 4' 5")
- Glazing Material: 4mm Toughened Glass
- Glazing Options: 24mm Double Glazing Included as Standard!
- Ventilation: 2 Plastic Vents Included
- Approx. Assembly Time: 1 - 2 Days*

*This is an approximate time only, based on 2 people. Assembly time may vary depending on season/weather conditions, foundation type, ability of those constructing, etc