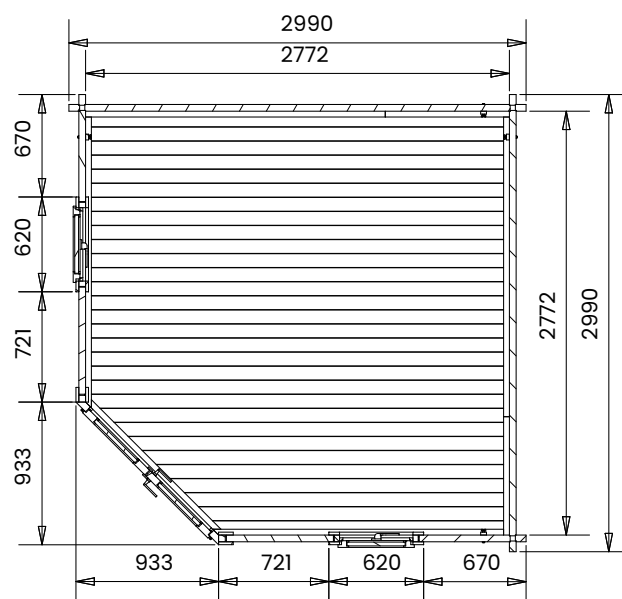
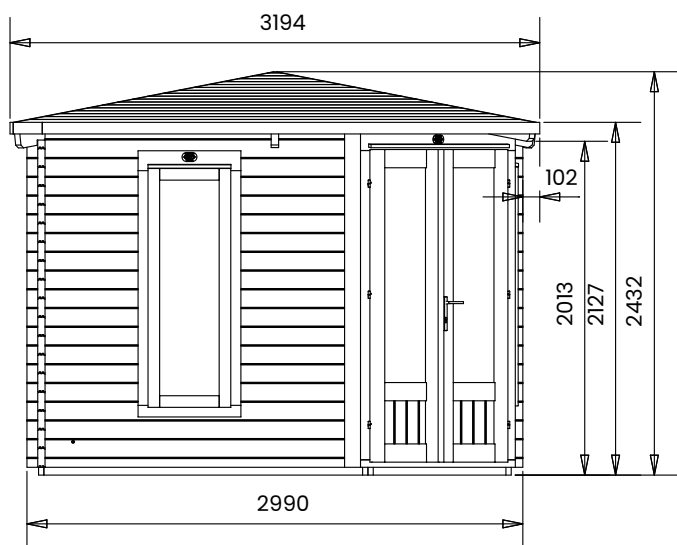
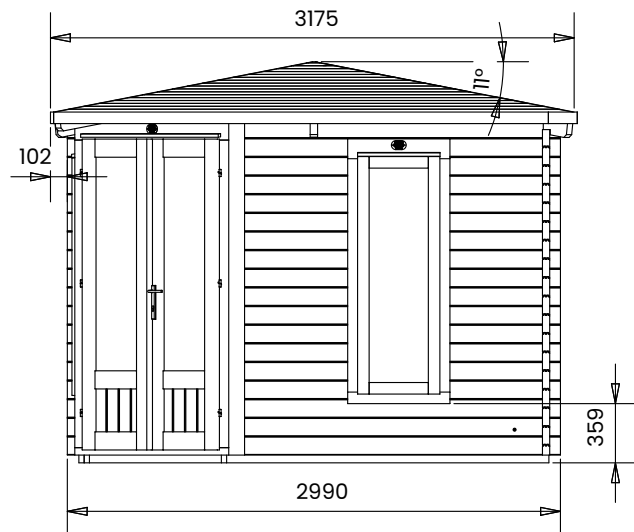


Coronet Corner Log Cabin



Specification

- Overall External Dimensions: 3.19m x 3.19m (10' 5" x 10' 5")
- External Width: 2.99m (9' 9")
- External Depth: 2.99m (9' 9")
- Internal Width: 2.70m (8' 10")
- Internal Depth: 2.70m (8' 10")
- Internal Area (m²): 7.29m²
- Ridge Height: 2.43m (7' 11")
- Internal Eaves Height: 2.07m (6' 9")
- Wall U-Value: 1.93 W/m²k
- Roof & Floor Thickness: 19mm Tongue and Groove
- Floor Bearers: Pressure Treated
- Storm Braces: Included
- Door Locking System: Industry Leading 4 Point Lock - 2 Cams, Latch & Hook Bolt
- Door Height (Including Frame): 2.02m (6' 7")
- Door Height (Walkthrough Height): 1.82m (5' 11")
- Window Locking System: Multi Point with Mushroom Headed Espagnolettes
- Window Opening Size: 0.43m x 1.37m (1' 4" x 4' 5")
- Glazing Material: 4mm Toughened Glass
- Glazing Options: Single Glazing on 28mm Walls. 24mm Double Glazing on 45mm Walls
- Ventilation: 2 Plastic Vents Included
- Approx. Assembly Time: 1 - 2 Days*

*This is an approximate time only, based on 2 people. Assembly time may vary depending on season/weather conditions, foundation type, ability of those constructing, etc