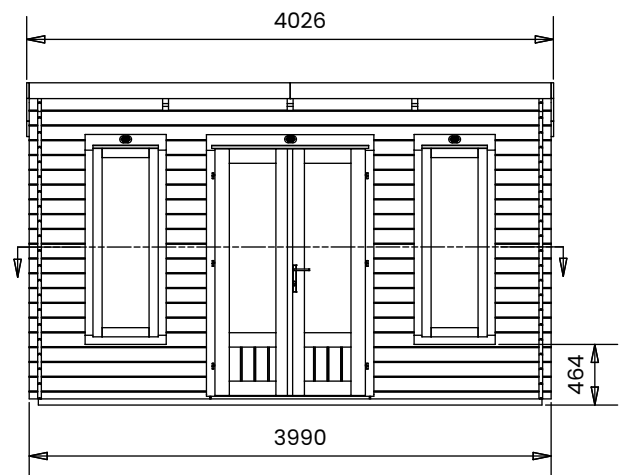
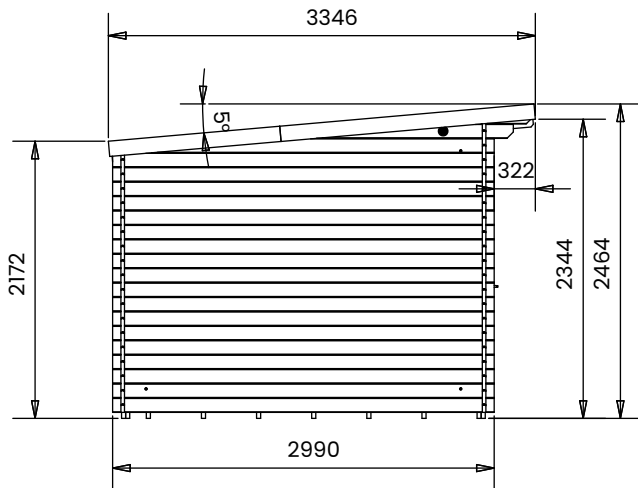
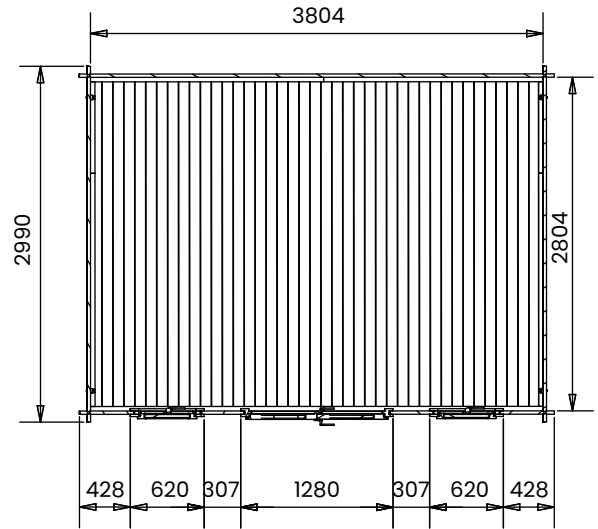


# Terminator Log Cabin



## Specification

- Overall External Dimensions: 4.02m x 3.35m (13' 2.25" x 10' 12")

- External Width: 3.99m (13' 1")

- External Depth: 2.99m (9' 9")

- Internal Width: 3.72m (12' 2")

- Internal Depth: 2.72m (8' 11")

- Internal Area (m<sup>2</sup>): 10.12m<sup>2</sup>

- Ridge Height: 2.46m (8' 0")

- Internal Eaves Height Front (to under the roof boards): 2.32m (7' 7")

- Internal Eaves Height Front (to under the roof purlins): 2.18m (7' 1")

- Internal Eaves Height Back (to under the roof boards): 2.07m (6' 9")

- Internal Eaves Height Back (to under the roof purlins): 1.93m (6' 3")

- Wall U-Value (W/m<sup>2</sup>k): 1.93 W/m<sup>2</sup>k

- Roof Style: Pent

- Roof & Floor Thickness: 19mm Tongue and Groove

- Floor Bearers: Pressure Treated

- Storm Braces: Included

- Wall Thickness: 45mm

- Glazing Material: 4mm Toughened Glass

- Glazing Options: 24mm Double Glazing as Standard!

- Ventilation: 2 Plastic Vents Included

- Approx. Assembly Time: 2 Days\*

\*This is an approximate time only, based on 2 people. Assembly time may vary depending on season/weather conditions, foundation type, ability of those constructing, etc