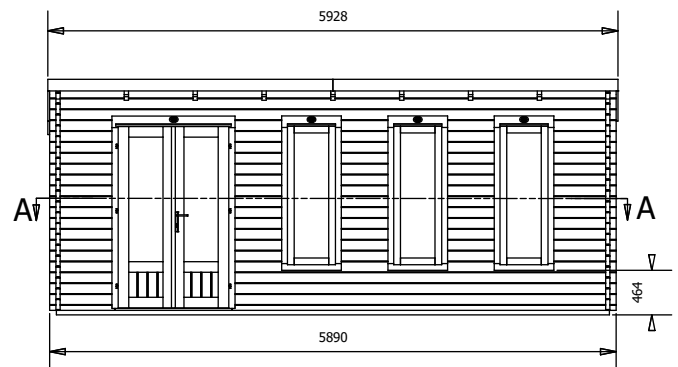
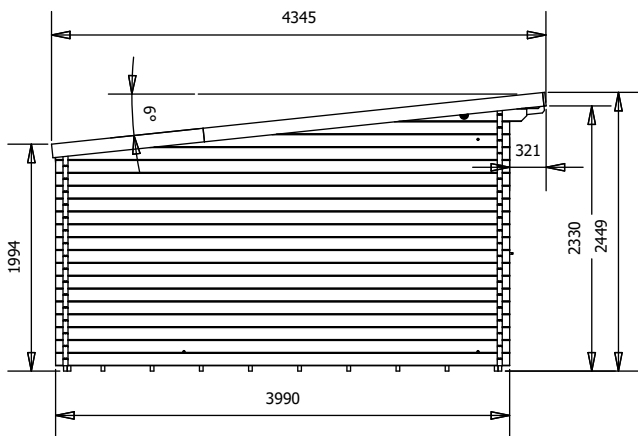
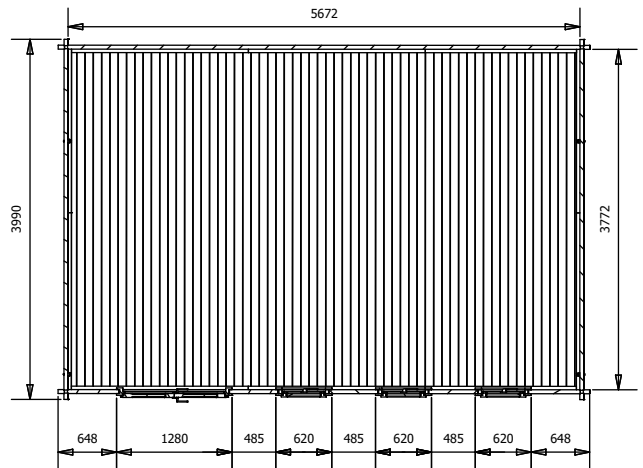


Terminator Log Cabin



Specification

- Overall External Dimensions: 5.92m x 4.35m (19' 5" x 14' 3")
 - External Width: 5.89m (19' 3")
 - External Depth: 3.99m (13' 1")
 - Internal Width: 5.67m (18' 7")
 - Internal Depth: 3.77m (12' 4")
 - Internal Area (m²): 21.38m²
 - Ridge Height: 2.45m (8' 0")
 - Internal Eaves Height Front (to under the roof boards): 2.30m (7' 6")
 - Internal Eaves Height Back (to under the roof boards): 1.90m (6' 2")
 - Wall U-Value: 1.93 W/m²k
 - Roof Style: Pent
 - Roof & Floor Thickness: 19mm
 - Floor Bearers: Pressure Treated
 - Storm Braces: Included
 - Door Height (Walkthrough Height): 1.82m (5' 11")
 - Door Width (Walkthrough Width): 1.11m (3' 7")
 - Door Locking System: Industry Leading 6 Point Lock – 2 Cams, Latch & Hook Bolt, 2 Shootbolts
 - Window Locking System: Multi Point with Mushroom Headed Espagnolettes
 - Window Opening Size: 0.43m x 1.37m (1' 5" x 4' 5")
 - Glazing Material: 4mm Toughened Glass
 - Glazing Options: 24mm Double Glazing as Standard!
 - Ventilation: 2 Plastic Vents Included
 - Approx. Assembly Time: 2 Days*
- *This is an approximate time only, based on 2 people. Assembly time may vary depending on season/weather conditions, foundation type, ability of those constructing, etc