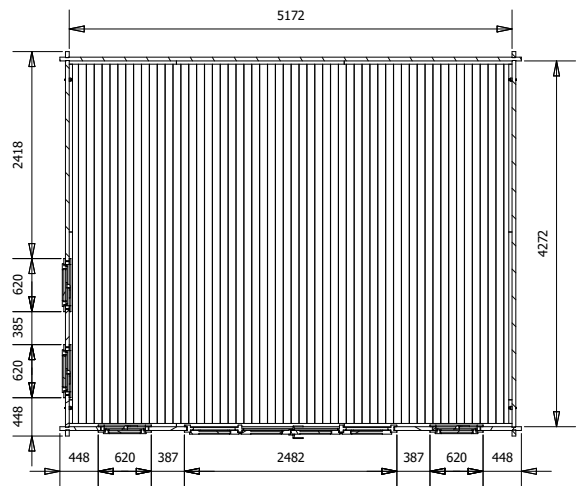
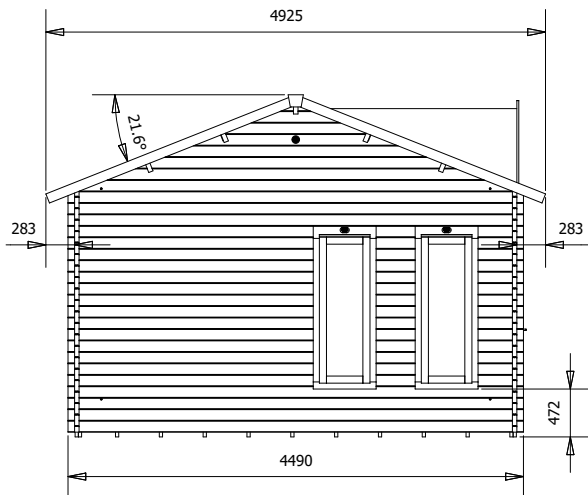
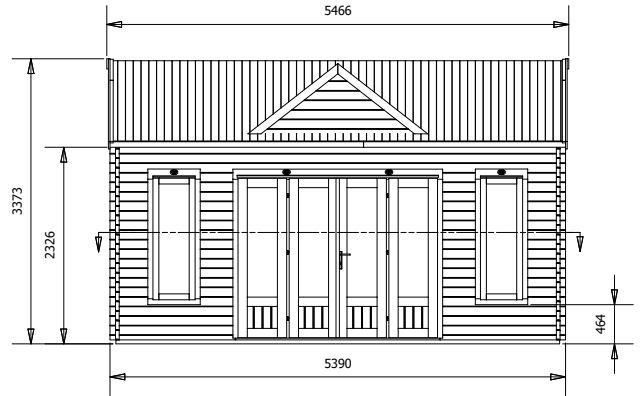


GhostFlower Log Cabin



Specification

- Overall External Dimensions: 5.46m x 4.92m (17' 10" x 16' 1")
- External Width: 5.39m (17' 8")
- External Depth: 4.49m (14' 8")
- Internal Width: 5.17m (16' 11")
- Internal Depth: 4.27m (14' 0")
- Internal Area (m²): 22.08m²
- Roof Overhang: 0.28m (0' 11")
- Ridge Height: 3.37m (11' 0")
- Internal Eaves Height: 2.42m (7' 11") Plenty of Headroom!
- Roof Thickness: 19mm
- Floor Bearers: Pressure Treated for Longevity
- Glazing Material: 24mm Toughened Glass
- Roof Covering Options: None, Felt or Shingles
- Wall Thickness: 45mm
- Floor Thickness: 19mm
- Roof Purlins: 210 x 45mm
- Window Opening Size: 0.43m x 1.37m (1' 4" x 4' 5")
- Door Height (Walkthrough Height): 1.82m (5' 11")
- Door Width (Walkthrough Width): Wide Opening 1.11m (3' 7")
- Door Locking System: Multi-point lock
- Fixings: All Items Supplied
- Please Note: All wood is planed, pre-cut (with the exception of trims), and pre notched for quick and easy construction
- Guarantee: 10 Years on Pressure Treated Timber against Rot and Insect Infestation
- Assembly Time: 2 Days*

This time is an approximation, based on two people building the basic product with no added extras. Assembly time may vary with additional items such as roof shingles, or external circumstances like the weather