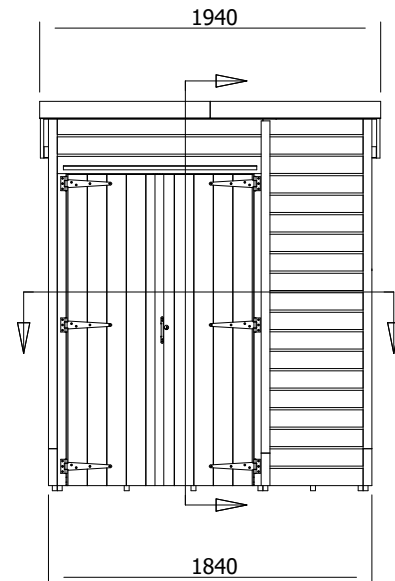
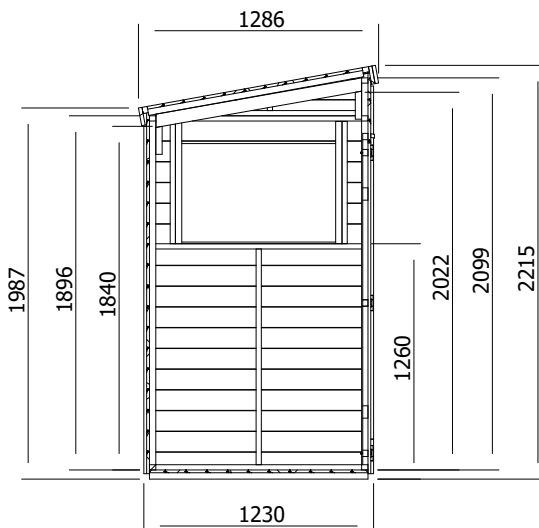
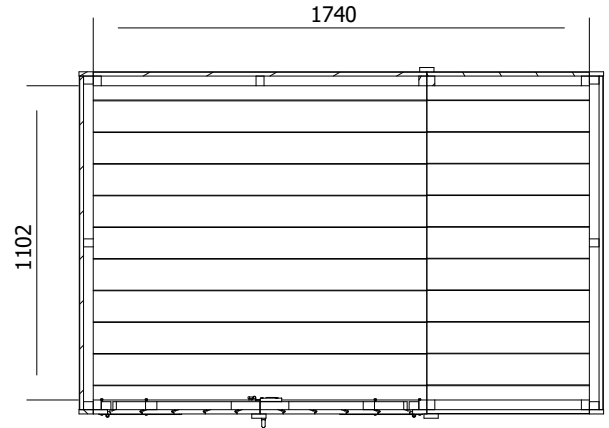


# Overlord Modular Reverse Pent Shed



## Specification

- **Overall External Dimensions:** 1.286m x 1.940m (4' 2.75" x 6' 4.5")
- **External Width:** 1.230m (4' 0.5")
- **External Depth:** 1.840m (6' 0.5")
- **Internal Width:** 1.102m (3' 7.5")
- **Internal Depth:** 1.740m (5' 8.5")
- **Internal Area (m<sup>2</sup>):** 1.917m (6' 3")
- **Overall Height:** 2.215m (7' 3.25")
- **Internal Eaves Height:** 2.099m (6' 10.75")
- **Roof Thickness:** 15mm Tongue & Groove
- **Roof Covering Options:** Felt Included as Standard
- **Roof Purlins:** 35mm x 70mm
- **Walls:** 15mm Tongue & Groove
- **Floor Thickness:** 15mm Tongue & Groove
- **Framing:** 28mm x 34mm
- **Glazing Material:** 4mm Toughened Glass
- **Shed Door Style:** Double Doors

- **Shed Door Locking System:** Lock and 2x Shoot Bolts
- **Floor Bearers:** Pressure Treated Bearers Included
- **Guarantee:** 10 Years on Timber against Rot and Insect Infestation
- **Please Note:** Pressure treatment is protecting against rot and infestation, it is not a water repellent. So we recommend a water repellent product to be used