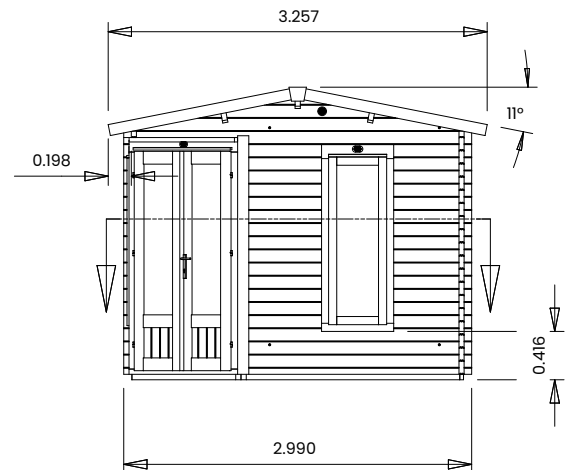
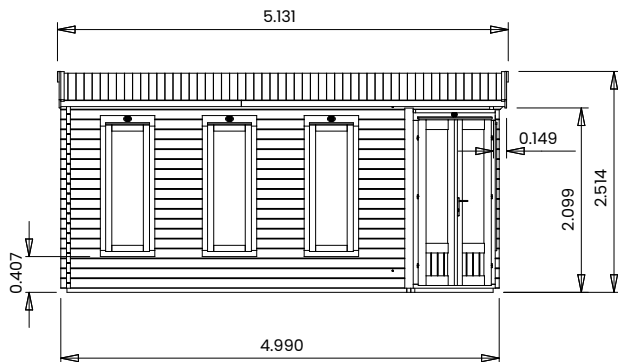
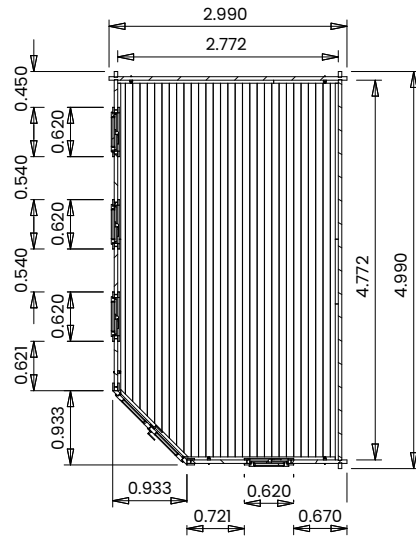


# DaftBadger Corner Log Cabin



## Specification

- Please Note: All sizes quoted are nominal
- Overall External Dimensions: 3.257m x 5.131m (10' 8" x 16' 6")
- External Width: 2.990m (9' 9")
- External Depth: 4.990m (16' 4")
- Internal Width: 2.772m (9' 1")
- Internal Depth: 4.772m (15' 7")
- Internal Area (m<sup>2</sup>): 13.228m<sup>2</sup>
- Ridge Height: 2.490m (8' 2")
- Internal Eaves Height: 2.136m (7' 0") Plenty of Headroom!
- Roof Overhang: 0.200m (0' 7")
- Roof Thickness: 19mm Tongue & Groove
- Roof Covering Options: None, Felt or Shingles
- Wall Thickness: 45mm
- Walls: 100% Slow-Grown Spruce

- Door Height (Walkthrough Height): 1.821m (5' 11")
  - Door Width (Walkthrough Width): Wide Opening 1.096m (3' 7")
  - Window Opening Size: 1.371m x 0.436m (4' 5" x 1' 5")
  - Building Style: Strong Interlocking Tongue & Groove Logs
  - Glazing Material: 4mm Toughened Glass
  - Glazing Options: 24mm Double Glazing Included as Standard
  - Floor Bearers: Pressure Treated for Longevity
  - Assembly Time: 2 Days
- This time is an approximation, based on two people building the basic product with no added extras.
- Guarantee: 10 Years on Pressure Treated Timber against Rot and Insect Infestation
  - Floor Thickness: 19mm Tongue & Groove
  - Included as Standard: Plastic Vents, Adjustable Storm Braces, Assembly Instructions and Fixings