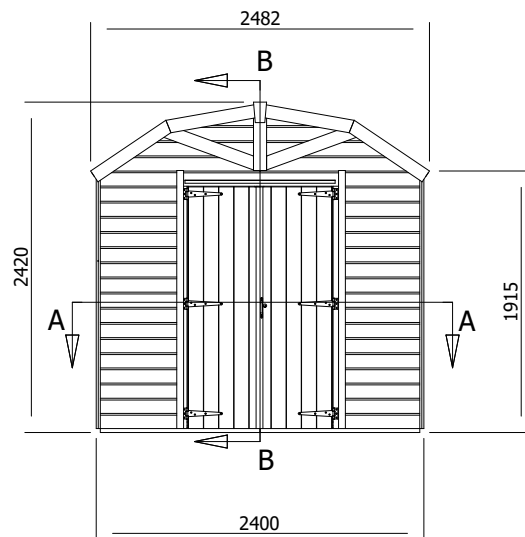
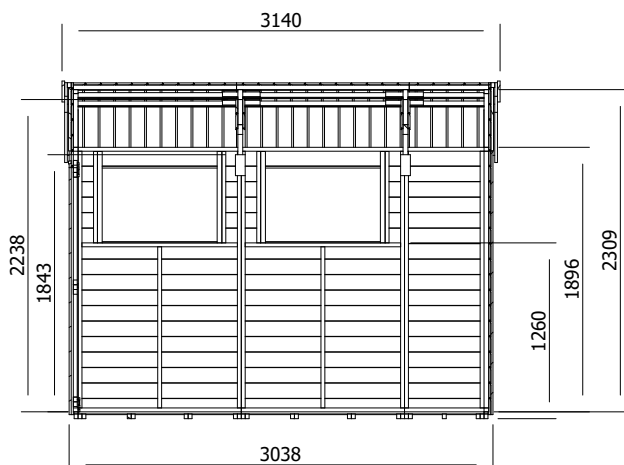
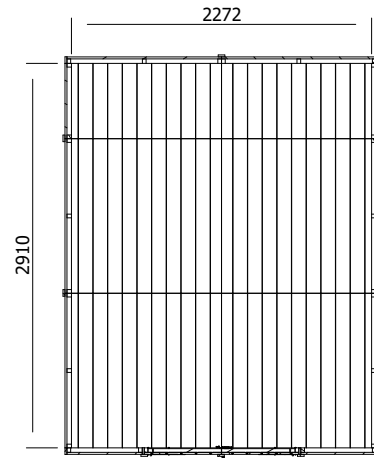


Overlord Modular Shed



Specification

- **Overall External Dimensions:** 2.482m x 3.140m (8' 2" x 10' 3")
- **External Width:** 2.400m (7' 10.5")
- **External Depth:** 3.038m (9' 11")
- **Internal Width:** 2.272m (7' 5")
- **Internal Depth:** 2.910m (9' 6")
- **Internal Eaves Height:** 1.896m (6' 3")
- **Internal Area (m²):** 6.612m²
- **Ridge Height:** 2.420m (7' 11")
- **Roof Thickness:** 15mm Tongue & Groove
- **Roof Covering Options:** Felt Included as Standard
- **Roof Purlins:** 70mm x 35mm
- **Walls:** 15mm Tongue & Groove

- **Floor Thickness:** 15mm Tongue & Groove
- **Framing:** 28mm x 34mm
- **Shed Door Style:** Double Doors
- **Shed Door Locking System:** Lock and 2x Shoot Bolts
- **Floor Bearers:** Pressure Treated Bearers Included
- **Guarantee:** 10 Years on Timber against Rot and Insect Infestation
- **Please Note:** Pressure treatment is protecting against rot and infestation, it is not a water repellent. So we recommend a water repellent product to be used