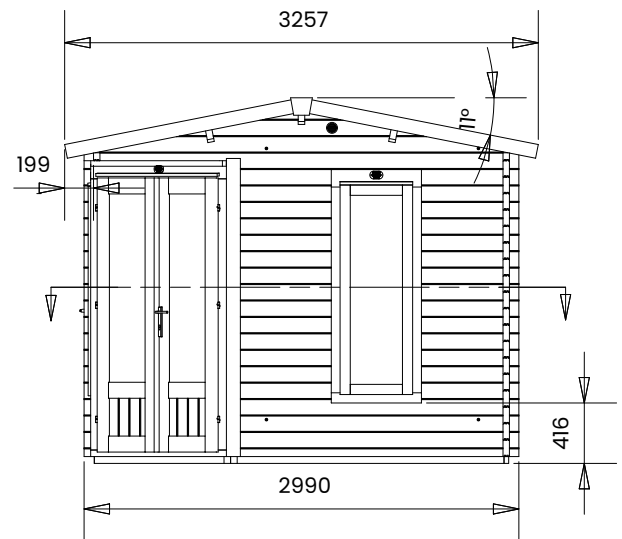
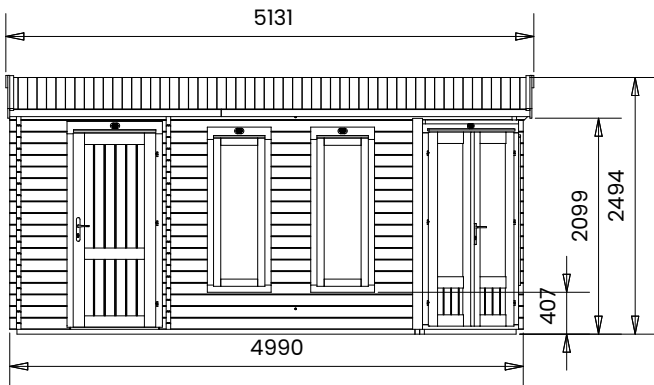
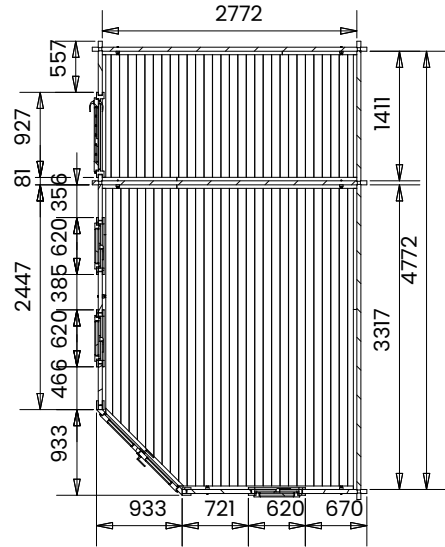


DaftDuck Log Cabin



Specification

- Overall External Dimensions: 3.257m x 5.131m (10' 8.25" x 16' 10")
- External Width: 2.990m (9' 9.75")
- External Depth: 4.990m (16' 4.5")
- Main Room Internal Width: 2.772m (9' 1.25")
- Main Room Internal Depth: 3.317m (10' 10.5")
- Main Room Internal Area (m²): 9.195m²
- Store Room Internal Width: 2.772m (9' 1.25")
- Store Room Internal Depth: 1.411m (4' 7.5")
- Store Room Internal Area (m²): 3.911m²
- Main Door Width (Walkthrough Width): 1.096m (3' 7.25")
- Main Door Height (Walkthrough Height): 1.821m (5' 11.75")
- Building Style: Strong Interlocking Tongue & Groove Logs
- Internal Eaves Height: 2.136m (7' 0")

- Window Locking System: Secure Multi-Point Locking with Espagnolettes
- Roof Overhang: 0.199m (0' 7.75")
- Window Opening Size: 1.371m x 0.436m (4' 6" x 1' 5.25")
- Walls: 100% Slow-Grown Spruce
- Roof Thickness: 19mm Tongue & Groove
- Roof Covering Options: None, Felt or Shingles
- Ridge Height: 2.494m (8' 2.25")
- Wall U-Value (W/m²K): 1.93 W/m²K
- Door Locking System: Industry Leading 6 Point Lock - 2 Cams, Latch & Hook Bolt, 2 Shootbolts
- Glazing Options: 24mm Double Glazing Included As Standard
- Windows: x3 Double Glazed
- Glazing Material: 4mm Toughened Glass