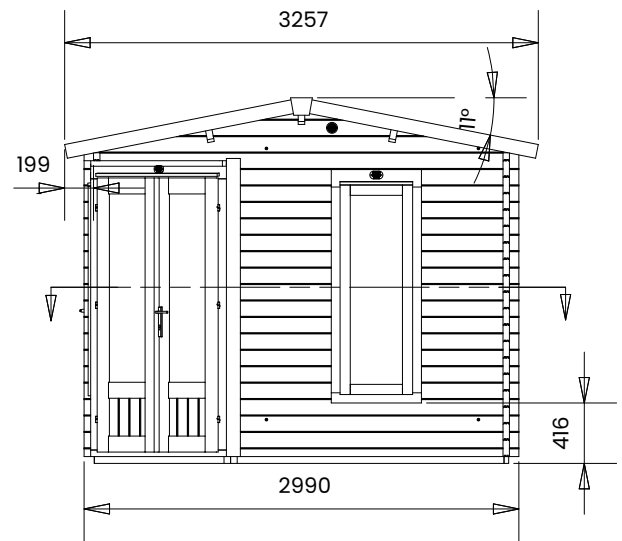
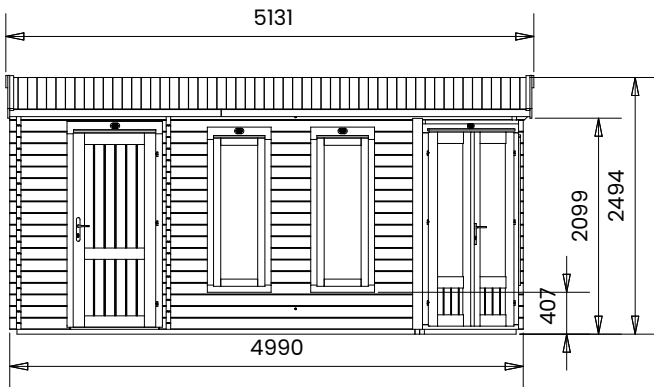
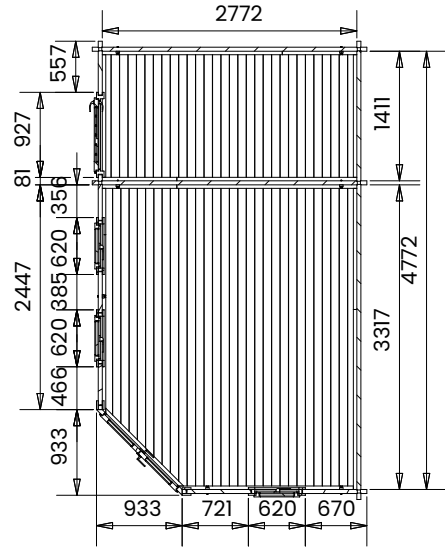


# DaftDuck Log Cabin



## Specification

- **Overall External Dimensions:** 5.131m x 3.257m (16' 10" x 10' 8.25")
- **External Width:** 4.990m (16' 4.5")
- **External Depth:** 2.990m (9' 9.75")
- **Main Room Internal Width:** 3.317m (10' 10.5")
- **Main Room Internal Depth:** 2.772m (9' 1.25")
- **Main Room Internal Area (m<sup>2</sup>):** 9.195m<sup>2</sup>
- **Store Room Internal Width:** 1.411m (4' 7.5")
- **Store Room Internal Depth:** 2.772m (9' 1.25")
- **Store Room Internal Area (m<sup>2</sup>):** 3.911m<sup>2</sup>
- **Main Door Width (Walkthrough Width):** 1.096m (3' 7.25")
- **Main Door Height (Walkthrough Height):** 1.821m (5' 11.75")
- **Building Style:** Strong Interlocking Tongue & Groove Logs
- **Internal Eaves Height:** 2.136m (7' 0")
- **Window Locking System:** Secure Multi-Point Locking with Espagnolettes
- **Roof Overhang:** 0.199m (0' 7.75")
- **Window Opening Size:** 1.371m x 0.436m (4' 6" x 1' 5.25")
- **Walls:** 100% Slow-Grown Spruce
- **Roof Thickness:** 19mm Tongue & Groove
- **Roof Covering Options:** None, Felt or Shingles
- **Ridge Height:** 2.494m (8' 2.25")
- **Wall U-Value (W/m<sup>2</sup>K):** 1.93 W/m<sup>2</sup>K
- **Door Locking System:** Industry Leading 6 Point Lock - 2 Cams, Latch & Hook Bolt, 2 Shootbolts
- **Glazing Options:** 24mm Double Glazing Included As Standard
- **Windows:** x3 Double Glazed
- **Glazing Material:** 4mm Toughened Glass