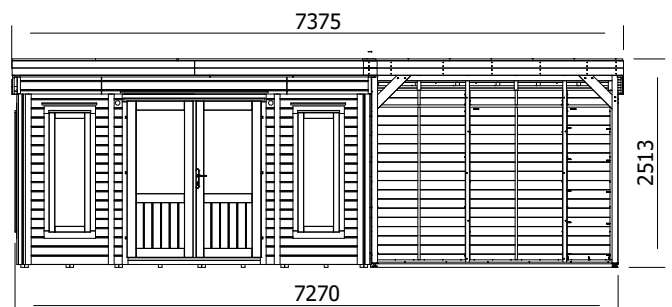
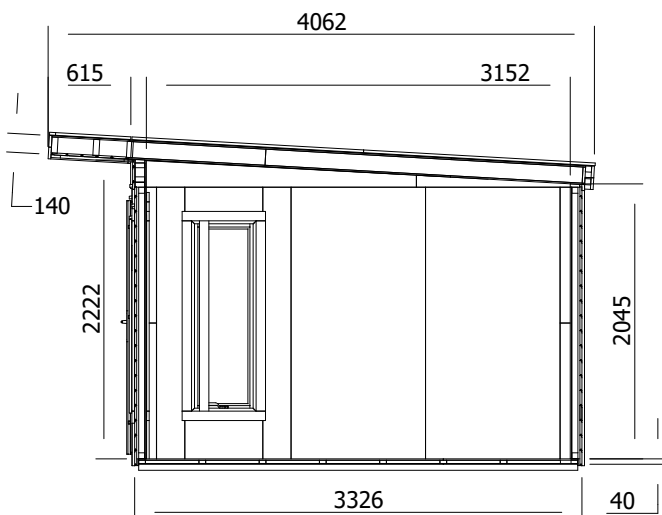
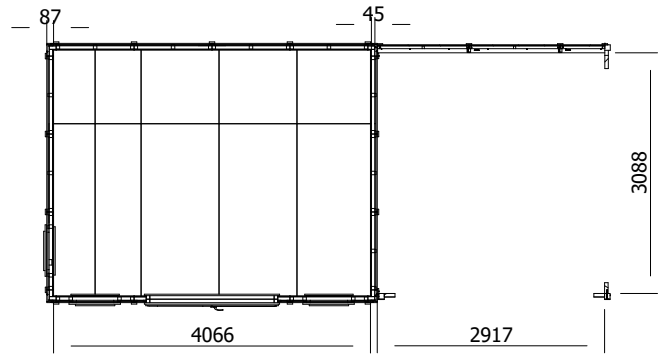


# Dominator Classic Garden Office with Side Canopy - W7.5m x D3.5m



## Specification

- **Overall External Dimensions:** 7.375m x 4.062m (24' 2.25" x 13' 4")
- **External Width:** 7.27m (23' 10.25")
- **External Depth:** 3.326m (10' 11")
- **Internal Width:** 4.066m (13' 4")
- **Internal Depth:** 3.152m (10' 4")
- **Internal Area (m<sup>2</sup>):** 12.82m<sup>2</sup>
- **Ridge Height:** 2.483m (8' 1.75")
- **Internal Eaves (Front):** 2.217m (7' 3.25")
- **Internal Eaves (Rear):** 2.046m (6' 8.5")
- **Roof Thickness:** 140mm
- **Roof Covering Options:** Superfelt Included as Standard
- **Floor Thickness:** 40mm
- **Floor Bearers:** Pressure Treated for Longevity
- **Wall Thickness:** 87mm
- **Walls:** 100% Pressure Treated Slow Grown Spruce
- **Framing:** 45mm
- **Insulation:** 25mm (Multifoil), 25mm (Optional additional PIR Insulation)
- **Door Style:** French Doors
- **Door Walkthrough:** 1.87m (6' 1.5") x 1.60m (5' 2.75")
- **Door Locking System:** Multipoint Locking System
- **Window Opening Size:** H1.42m x W0.48m (4' 7.75" x 1' 7")
- **Glazing Material:** 24mm Double Glazing Included As Standard
- **Please Note:** All fixing needed for assembly are supplied
- **Please Note:** All wood is planed, pre-cut (except trims), and pre-notched for quick and easy construction.
- **Approx DIY Assembly Time:** 2-3 Days - This is an approximate time only, based on 2 people. Assembly time may vary depending on the season/weather conditions, foundation type, ability of those constructing, etc.