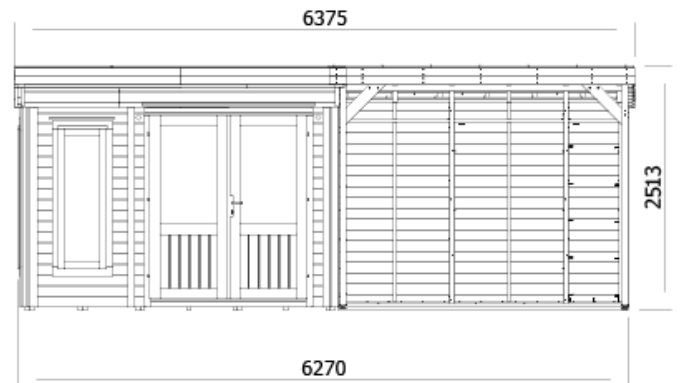
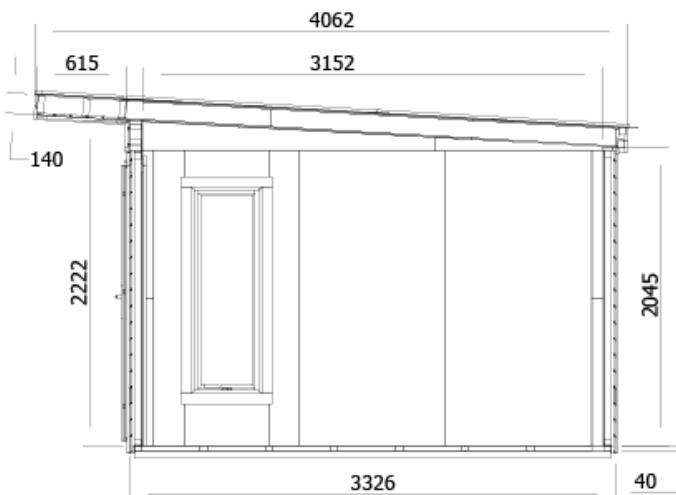
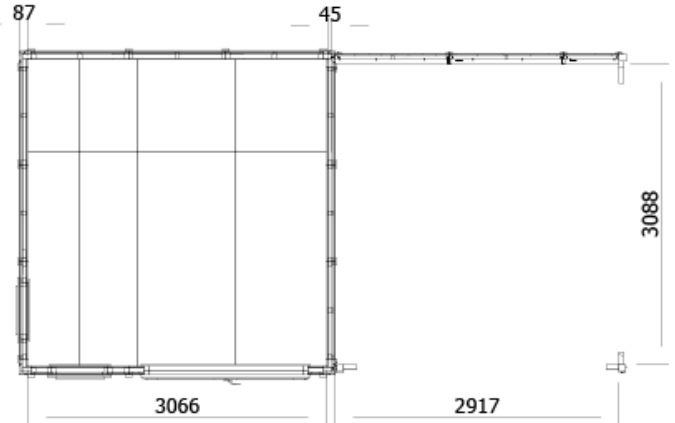


Dominator Classic Garden Office with Side Canopy W6.5m x D3.5m



Specification

- Overall External Dimensions: W6.38m x D4.06m (20' 11" x 13' 3.75")
- External Width: 6.27m (20' 6.75")
- External Depth: 3.33m (10' 11")
- Internal Width: 3.066m (10' 0.75")
- Internal Depth: 3.152m (10' 4")
- Internal Area (m²): 9.66m²
- Internal Eaves Height (Front): 2.22m (7' 3.25")
- Internal Eaves Height (Back): 2.05m (6' 8.5")
- Ridge Height: 2.483m (8' 1.75")
- Roof Thickness: 140mm
- Overall Wall Thickness: 87mm
- Floor Thickness: 40mm
- Framing: 45mm
- Walls: 100% Slow Grown Spruce
- Floor Bearers: Pressure Treated for Longevity

- Floor Bearers: Pressure Treated for Longevity
- Door Walkthrough Height: 1.87m (6' 1.5")
- Door Walkthrough Width: 1.60m (5' 2.75")
- Door Locking System: Industry Leading Multi-Point Lock
- Approx DIY Assembly Time: 2-3 Days* *This is an approximate time only, based on 2 people. Assembly time may vary depending on season/weather conditions, foundation type, ability of those constructing, etc